



Western Kentucky University
American Sign Language Studies

FROM OUR HANDS TO YOURS

College of Health and Human Services

February 2015



"If it wasn't for Ashley Fox believing in my skills and offering me a job in the lab, I would have never been where I am today. I would never have become a peer mentor, lab worker or become the lab manager! I hope this semester everyone can see how much I believe in them, so that they can see that they can do anything!"

-Abby Dupree, Lab Manager

New Semester. New People

The ASL Studies Lab has always been a huge part of ASL classes here at WKU. The lab workers are among the most diligent and hardworking students in the ASLS program. This semester, the ASL Lab

is excited to announce two new lab workers, Shelby and Lauren! They are both peer mentors with in the ASLS program; and, Lauren is on ASLO board and PAH executive staff. For the ASL Lab, only good news comes in threes! We are not only welcoming these lovely ladies to the ASL Lab, but also a new lab manager!



CONTINUED ON PAGE 3

American Sign Language Organization

Would you still like to become a member of the American Sign Language Organization? You are in luck! Starting Monday, February 1st, ASLO is hosting a membership drive until Monday, February 8th. The membership fee is discounted to \$15! The ASL Organization is a great way to meet with signers here at WKU and create friendships with those who love to sign! If you would like more information about the ASLO, contact Lauren Tucker at lauren.tucker043@topper.wku.edu or click the social media link's to the right!



Did you know that scuba divers often use sign language under water? ❄️

People who are deaf can use sign languages to communicate with others who are at a variety of distances away in multiple settings. In the same aspect, spoken languages would have to be amplified in some manner to be heard that far away.

Santa's Workshop

As school finished for the Fall 2015 semester, multiple students who are a part of the ASLS program and the ASL Organization came together and travelled to Danville, Kentucky. These students helped the Kentucky School for the Deaf (KSD) host a day called Santa's Work Shop. This fun-filled day gave these students the opportunity to sign with elementary students, teachers and staff.

CONTINUED ON PAGE 2

#AppreciationPost

There are many people who do so much for the ASLS program: ASLO creates and manages all of the DCE's; Dr. Ashley Fox is the assistant Professor & Coordinator of the ASLS program; and, all of our teachers, staff, lab workers, and peer mentors do a wonderful job at supporting and educating the ASLS students. With all of these hard working people, there is one person that many people do not see, and yet he has done so much here in the ASLS program and with in the ASL Organization.

CONTINUED ON PAGE 3

Santa's Workshop

The elementary school students were able to participate in a variety of activities. ASLO Board members Stevi and Miranda signed the story "The Night Before Christmas" while the children decorated and ate their own cookies. Next, ASLO member Craig and Board member Kelly made pipe cleaner candy canes. Board

member Molly watched "How the Grinch Stole Christmas" with all of the kids, while Jesse, Sierra, and Beckie worked on different Christmas Activity sheets. ASLO board member Austin and ASLO member Rebekah helped the kids make reindeer food and reindeer clothes pins. Thank you to Luke Akridge for all of these amazing pictures!!



We all would like to thank KSD for letting us be a part of Santa's workshop! We look forward to next year's event and hope to attend!



If you would like more information about the Kentucky School for the Deaf, then click the picture to the right for a link to their homepage. If you would like more pictures of the event, then click [here](#).



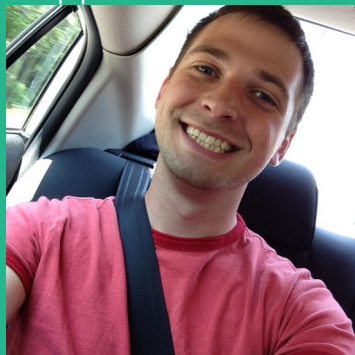


New Semester, New Additions

Last semester, as we said goodbye to Roxxi Mclean as the ASL Lab manager, Dr. Ashley Fox knew that this semester would require a special person to fill Roxxi's shoes. When the Fall semester of 2013 started, Abby began ASL classes. Before her spring semester of 2014 finished, she knew she wanted to minor in ASL. Over the summer, Abby was contacted by Dr. Fox about a possible meeting. Abby said, "I was afraid that Ashley didn't want me to minor in ASL. I was so scared of what she was going to say. I had no idea how to respond." Finally, after a few emails between one another, Dr. Fox revealed to Abby that the ASLS program needed a new lab worker and offered her the job. Abby said, "I was terrified, but I was also really excited to be more involved in ASL." Now, Abby has been a lab worker for a year and a half, and after much consideration, Dr. Fox decided to offer Abby the Lab Manager position. We are excited to have all three of these girls as Lab workers! If you would like more information about the Lab Workers or the ASLS Lab then click [here](#).



#AppreciationPost



His name is Luke Akridge. Luke has been a part of the ASLS program since 2010. In the Spring of 2011, he was elected the technology chair for the ASLO board and has been the technology chair ever since. Soon after this, he became a peer mentor; and, in the fall of 2013, he was chosen as PAH executive staff. Not only, has Luke been the "tech" guy ASLS always needs, but he also has been our photographer for all ASL related events. He also created and updates both the ASLO and

ASLS websites. He has done so much for the program that we could not fit it in this text box. Thank you, Luke, for everything you have done! We would have not come this far without you! To see some of Luke's hard work click the "ILY" heart!



Upcoming Events

February

5th: Deaf Night Out *(Advanced Only)*

6:00pm

7th: First Baptist Church Super Bowl Party

8:00pm

8th: ASLO Meeting*

8:00pm

10th: We LOVE ASL Game Night

7:00pm-9:00pm

21st: Gospel Community Church

3:00pm *(Owensboro)*

21st: Ice Skating+

6:00pm

27th: Deaf/Blind Workshop*

All Day

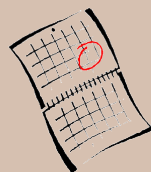
28th: Spencer's Coffee *(Advanced Only)*

4:00pm-6:00pm

March

1st: CiCi's Pizza

6:00pm-8:00pm



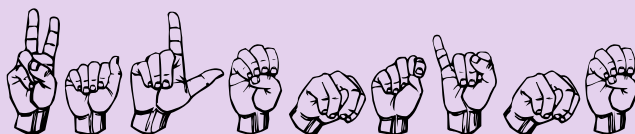
Click on the calendar for more information on upcoming events.

**Indicates events that are NOT DCE's.*

+Indicates events that are ASLO members only.

Learn to sign!

V-A-L-E-N-T-I-N-E



For more information on events and updates follow us on our social media pages or check out our website! Click on the pictures below for links to our pages.

#chhs_wku



#wkuasls