

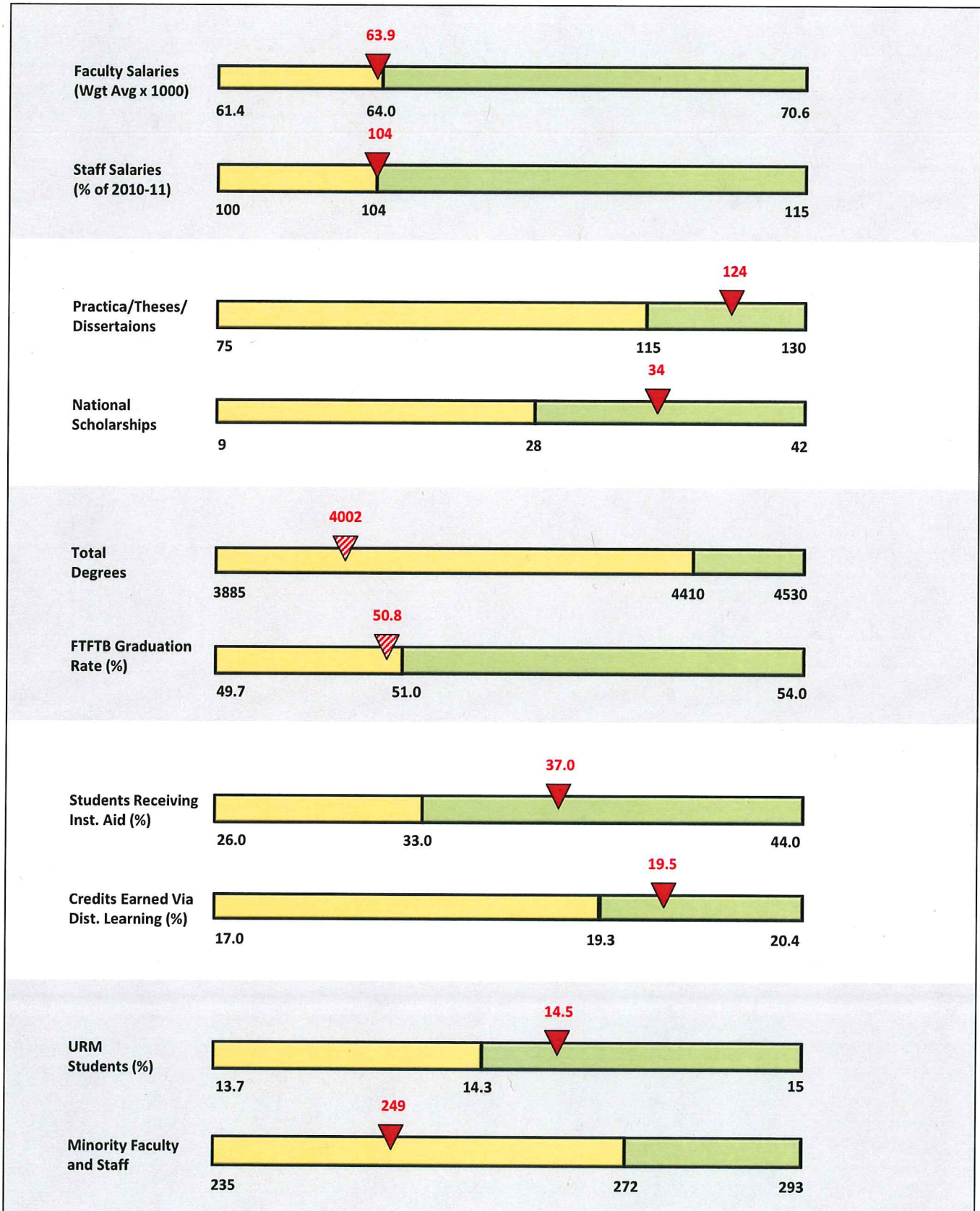


**CHALLENGING THE SPIRIT
ACTION PLAN PROGRESS REPORT SUMMARY
21 August 2015**

Approaching the end of the third full year of implementation, we continue to make demonstrable progress in advancing institutional priorities established in the action plan. Of 42 performance metrics, 29 are on-pace or ahead or projections. More important, we have already surpassed 2017-18 targets for 16 of these 29 indicators:

Performance Metric	2017-18 Target	2014-15 Actual
1.1. Connections Course Enrollments	2000	2208
1.1. Honors College Graduates	175	207
1.2. Professorial Faculty per FTES (x 1000)	36.0	36.5
1.3. International Partnerships	50	54
1.4. Honors Capstone Experience/Thesis Projects	75	91
1.4. REACH Week Presentations	325	351
2.1. International Students	1050	1402
2.3. Average Time to Degree	4.12	4.10
3.1. KCTCS Transfers	1650	2317
3.1. STEM+H Degrees	1130	1191
3.2. Regional Priority Partnerships	150	208
3.2. Arts & Cultural Events Attendance (x 1000)	29.5	30.1
4.1. New/Renovated Academic SqFt (x 1000)	3500	3753
4.1. New/Renovated Student Support SqFt (x 1000)	2196	2343
4.1. New/Renovated Athletic SqFt (x 1000)	415	489
4.4. Energy Usage (kWH/SqFt)	11.4	11.3

The slider graphs below chart progress to date on key indicators reflecting the domains of (1) faculty and staff compensation, (2) student success, (3) degree production, (4) student support, and (5) diversity. Each graph spans from the 2010-11 baseline to 2017-18 target; the division between yellow and green indicates the targeted value for 2014-15, and the red arrow shows progress to date. Hatched red arrows indicate metric data that are not yet finalized for 2014-15.

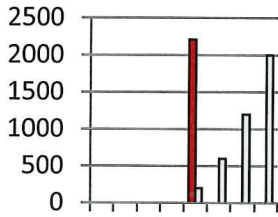


APPENDIX
Progress on Individual Performance Metrics,
By Strategic Goal

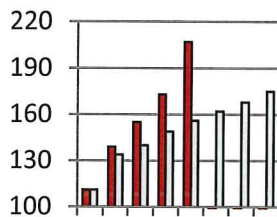
On that pages that follow, each graph spans from the 2010-11 baseline year to the 2017-18 target year. Grey bars indicate targeted values for each academic year; red bars show actuals. Hatched red bars indicate metric data that are not yet finalized for 2014-15.

GOAL 1. FOSTER ACADEMIC EXCELLENCE

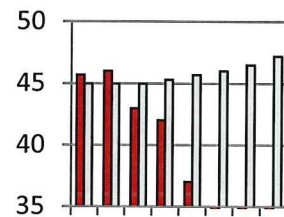
**Connections
Course Enrollments**



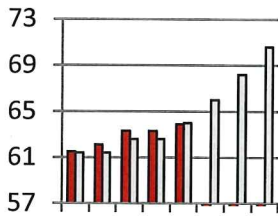
**Honors College
Graduates**



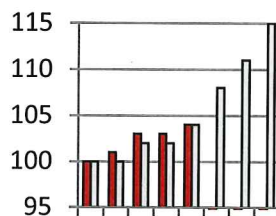
**Percentage Enrolled
to Admitted**



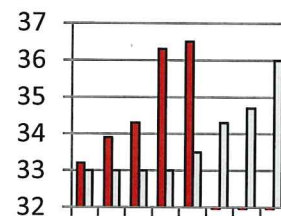
**Faculty Salaries
(weighted avg X \$1000)**



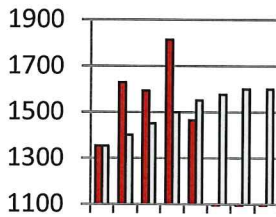
**Staff Salaries
(% of 2010-11)**



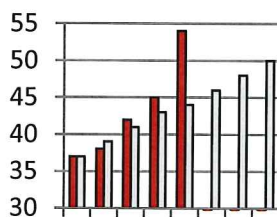
**Professorial Faculty
Per FTES (x 1000)**



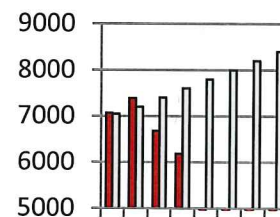
**Study Abroad
Enrollments**



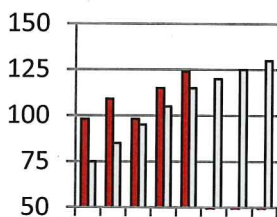
**International
Partnerships**



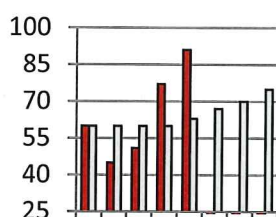
**Global Studies
Enrollments**



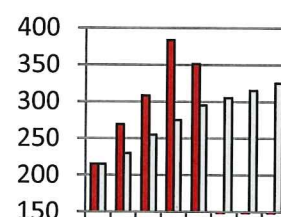
**Practica/ Theses/
Dissertations**



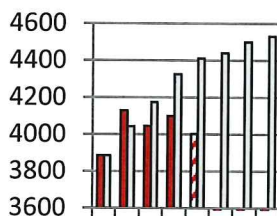
**Honors CE/T
Projects**



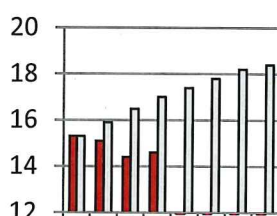
**REACH Week
Presentations**



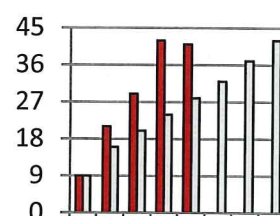
**Total
Degrees**



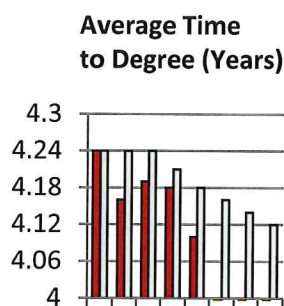
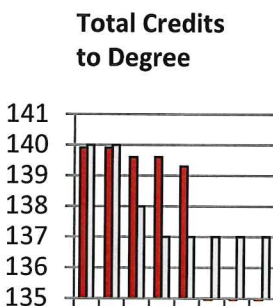
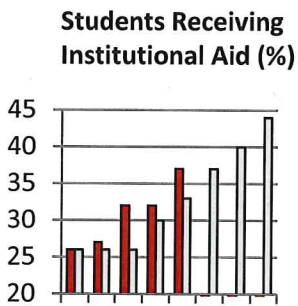
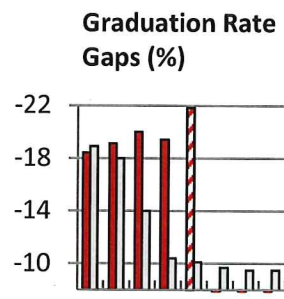
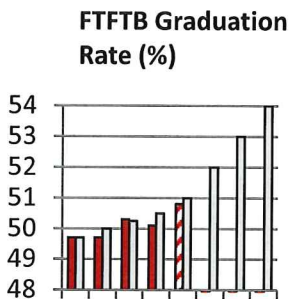
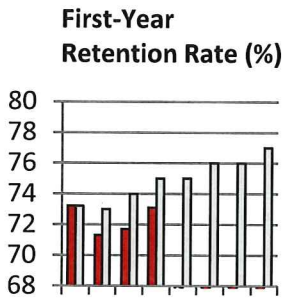
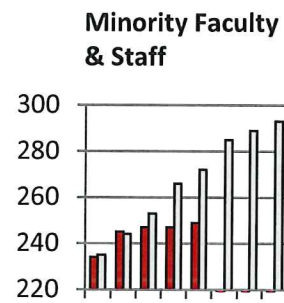
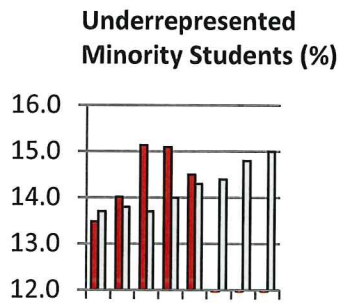
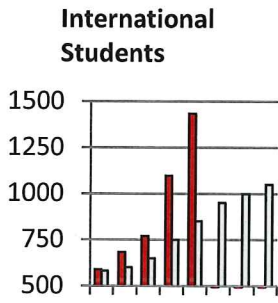
**New K-12 Teacher
Excellence (%)**



**National
Scholarships**

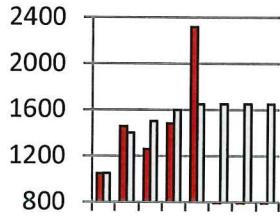


GOAL 2. PROMOTE A DYNAMIC AND DIVERSE UNIVERSITY COMMUNITY

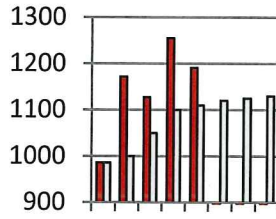


GOAL 3. IMPROVE QUALITY OF LIFE FOR OUR COMMUNITIES

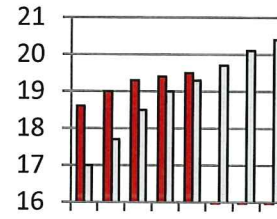
**KCTCS
Transfers**



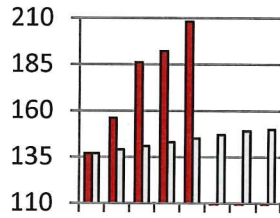
**STEM+H
Degrees**



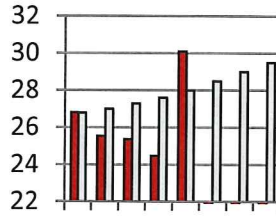
**Credits Earned Via
Distance Learning (%)**



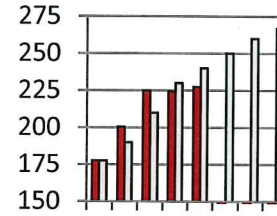
**Regional Priority
Partnerships**



**Arts & Cultural Events
Attendance (x 1000)**

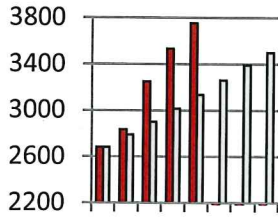


**Athletic Events
Attendance (x 1000)**

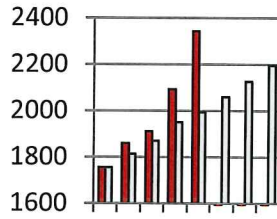


GOAL 4. SUPPORT THE CORE MISSION WITH A ROBUST CAMPUS INFRASTRUCTURE

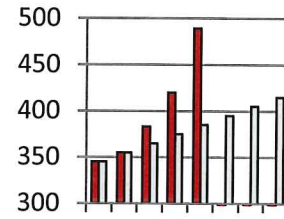
New/Renovated Academic SqFT (x 1000)



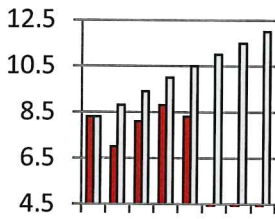
New/Renovated Student SqFT (x 1000)



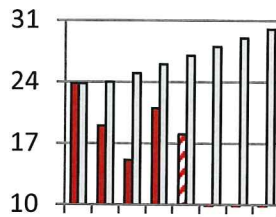
New/Renovated Athletic SqFT (x 1000)



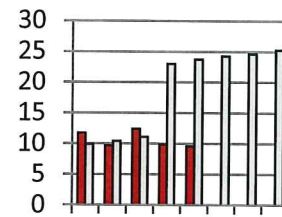
Federal Awards (\$M)



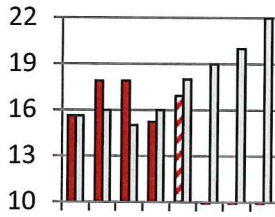
Total Research & Sponsored Projects (\$M)



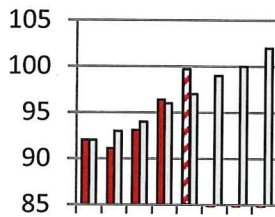
Sponsored Project Expenditures per FTEF (x 1000)



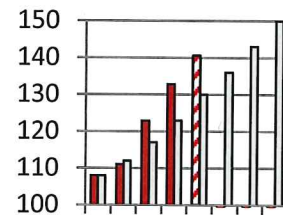
Annual Gift Deposits (\$M)



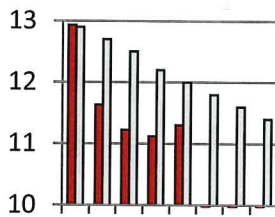
Deferred Gift Inventory (\$M)



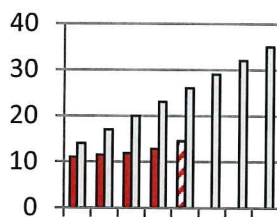
Total Endowment (\$M)



Energy Usage (kWh/SqFt)



Solid Waste Recycled or Diverted (%)



Surplus Materials Re-Used (%)

