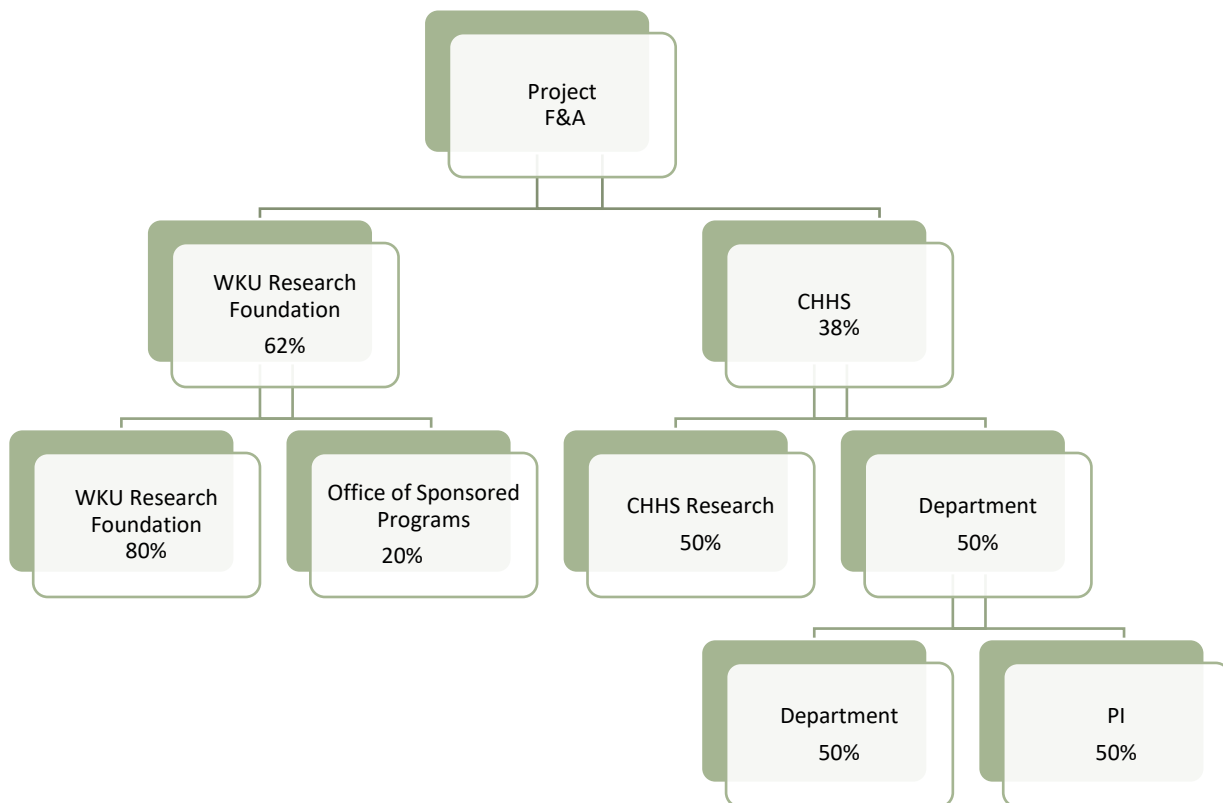


CHHS Indirects Procedure

Many external grants provide finance and administrative funds (F&A), which are used to support the university's infrastructure and physical resources and needs. These monies are [distributed](#) through the University—the distributed percentages are called Indirects.

Indirects associated with CHHS grants are reported to the CHHS Dean's Office and deposited monthly into a dedicated CHHS index. A percentage of the generated F&A are allocated for the PI and the PI's department/unit (see breakdown below). The PI's allocation can be divided further among co-investigators of the grant project. Complete an F&A Agreement form to secure this additional allocation. The CHHS Dean's Office staff will track allocations and spending of Indirects funding for each entity.

The allocation for CHHS Indirects support research in the College, such as project cost share, matching, equipment purchases, faculty research needs, and funding the Staff Incentive Program.



Redistribution was made effective 11/2/2016.