

Kelly Autism Program News

Western Kentucky University Jones Jagers, Rm 108 B 1 Big Red Way Bowling Green, KY 42101

Clayton & Victoria enjoy working at Leichhardt's Nursery

Victoria Kelly and Clayton Hall are spending their summer making Leichhardt's Nursery a little more beautiful. Both of these young adults are watering plants, cutting off dead blooms and pulling weeds during their time in the greenhouse.

Victoria began working at Leichhardt's on May 24, 2004, and enjoys working in an outdoor setting with flowers and plants. She is becoming very skilled at watering plants and cutting dead blooms off the flowers.

Clayton Hall began at Leichhardt's Nursery on May 25, 2004. Since his introduction at the nursery, he has acquired many skills such as watering flowers and pulling dead blooms off the

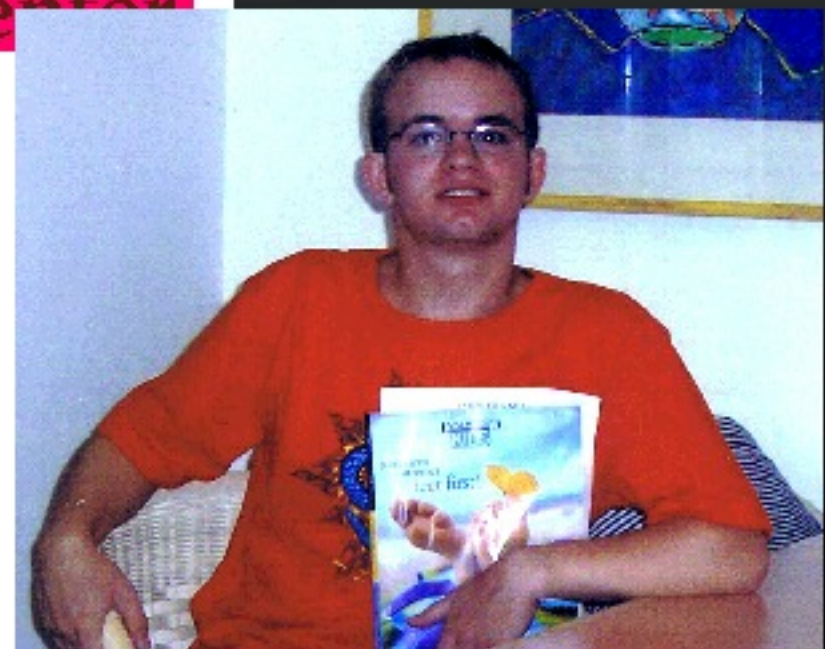


Nathan Enjoys Time Spent Working at Lowe's Garden Center

Nathan Baker is enjoying a fun-filled summer working at Lowe's and working out at the Preston Center.

Nathan is very interested in horticulture, and is expanding his knowledge by working in the Lowe's

Lawn and Garden Center. At Lowe's, Nathan waters the plants and pulls dead blooms off of the flowers. He really enjoys working in the greenhouse, and says that watering the plants is his favorite part.



The Gift of Collaboration

One of the goals of the Clinical Education Complex as well as The Kelly Autism Program is collaboration with and between colleges. To that end, The Kelly Autism Program began collaborating with the Gordon Ford College of Business last year. As a result of the collaboration between Dr. Leo Simpson, management professor, WKU has won state, regional, and national recognition for its Entrepreneurial Program. Through the efforts of the SIFE, particularly Ms. Christine

Burton and Mr. Jeff Felchner, the KAP staff marketed our "first annual signature Christmas card project." Such efforts were recognized by the business community as a 'model partnership' between programs serving the community and the business community. According to Mr. Kelly, KAP Governing Board chair, "The recognition Dr. Simpson and his students received is a tribute to our efforts to involve WKU's colleges in collaboration as they bring their talents and

resources to our unique program." It is the KAP staff's intention to continue giving and receiving the gift that continually gives: collaboration.

Written by: F. Kersting



Thank You!

The Kelly Autism Program would like to thank Suzanne Vitale for sponsoring the June newsletter. Your contribution is greatly appreciated by the staff of The Kelly Autism Program.



This newsletter is very important to us and to you. It is a way for us to communicate with each other. As we expand the readership, the costs increase. Both boards recommended that we ask for sponsorships to defray the costs. If you sponsor a newsletter edition, there are three recognition possibilities: 1) recognize your business, 2) recognize you, or 3) anonymous. We will honor which ever option you select. For an issue, the sponsorship cost is \$150.00. Please contact The Kelly Autism Program staff at (270) 745-8903 kellyautismprogram@hotmail.com

The Kelly Autism Program is supported by a private foundation. In 2004 & 2005, The Kelly Autism Program received the majority of its operating funds from that foundation. If you want to make a donation or discuss estate planning or a pledge, please call or email The Kelly Autism Program at (270) 745-8903 kellyautismprogram@hotmail.com <http://www.wkncec.com>