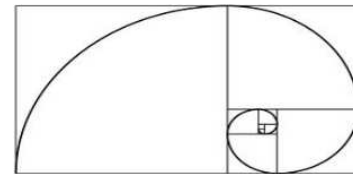




$$B(u, x) = \sum_{k=0}^N \binom{N}{k} \frac{N!}{k!(N-k)!} u^k (1-u)^{N-k}$$

$$B(u, y) = \sum_{k=0}^N \binom{N}{k} \frac{N!}{k!(N-k)!} u^k (1-u)^{N-k}$$

$0 \leq u \leq 1$

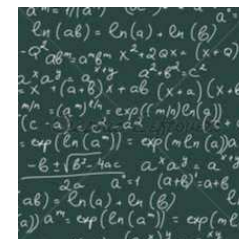
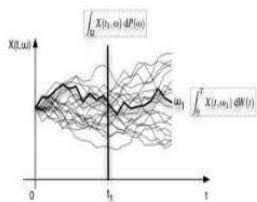
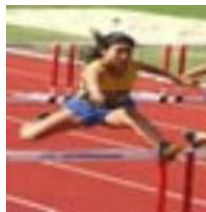


31st Annual Mathematics Symposium

MATHEMATICS AND SPORTS

October 28-29, 2011

Western Kentucky University
Bowling Green, KY

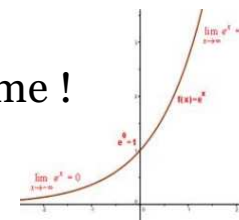
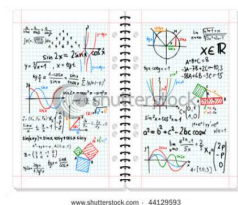


Free registration !

Any talks on mathematics, applied mathematics, statistics, computer science, or related topics are welcome !

Student presentations are especially welcome !

Funds for student travel are available !



Keynote Speakers

Prof. Ronald Gould (Emory University)

"Rating Player Performance - The Old Argument of Who is Best"

Prof. Kenneth Massey (Carson-Newman College)

"Sports Ratings by Linear Regression with Lp norms"



$$\Re z = \frac{\frac{\theta + \psi}{2}}{\left(\frac{\theta + \psi}{2}\right)^2 + \left(\frac{1}{2} \log \left| \frac{B}{A} \right|\right)^2}$$

Funding is provided by:

- NSF grant DMS-0846477 through the MAA Regional Undergraduate Mathematics Conferences Program
- Ogden College of Science and Engineering, WKU
- Department of Mathematics and Computer Science, WKU

More information (including how to submit an abstract) at:
www.wku.edu/math/symposium.php

