

# *Nursing Spirit*

College of Health & Human Services, School of Nursing Publication

Volume 1, Spring 2016

Kaitlin Wells  
May 2016  
BSN Graduate

BSN Program Set to Expand, pg. 4

Alumni Toast, pg. 6

2015-2016 Graduates, pg. 26

# Letter from the Director



We are pleased to share with you our first Nursing Newsletter. We hope to use this periodical to help keep our alumni, community agencies, and current students informed of changes and accomplishments at the WKU School of Nursing. As you will see, as you read through the articles, we have a lot going on this year.

We will be hosting our CCNE site visit in April 2017. We are in the process of writing the self-study report now, and will be asking some of you to come to campus to meet with our visitors. We will start expanding openings in the BSN program in Fall of 2017 as we phase out the traditional ASN program. We will continue to offer the online LPN to ASN program, as this program is not currently offered by local community colleges. We will also continue our popular online RN to BSN program. Finally, we are increasing opportunities for graduate students. The new Urgent Care/ER track for nurse practitioners will be starting this fall, and we will continue to grow the new Psychiatric Mental Health Nurse Practitioner track as well. The DNP program is continuing to grow and we should have more DNP graduates available for the workforce this next year.

We would love to include more alumni news for our next newsletter, so if you have news for us, please email [www.wku.edu/nursing](http://www.wku.edu/nursing) to let us know what you are up to.

Thank you for all you do to support the various programs and students here at WKU!

Dr. Mary Bennett, DNSc, APRN-FNP  
 Director, WKU School of Nursing



# Nursing Spirit

College of Health & Human Services School of Nursing Publication

*Nursing Spirit* e-magazine is published by  
 Western Kentucky University's  
 College of Health & Human Services  
 School of Nursing.

**Dean, College of Health & Human Services**

Dr. Neal Chumbler

**Director, WKU School of Nursing**

Dr. Mary Bennett

**DNP Program Coordinator**

Dr. Eve Main

**Graduate Program Coordinator**

Dr. Beverly Siegrist

**BSN Program Coordinator**

Dr. Sherry Lovan

**RN to BSN Program Coordinator**

Dr. Cathy Abell

**ASN Program Coordinator**

Mrs. Kacy Harris

**LPN to ASN Program Coordinator**

Dr. Lora Moore

**Editor/Creative**

Susan Megahee

## Contents

Program Expansion.....pgs. 4-5

Alumni Toast, M. Susan Jones.....pgs. 6-7

Student Awards & Achievements.....pgs. 8-10

Alumni Spotlight.....pg. 11

Faculty Promotions, Hires & Achievements...pgs. 12-15

Current Research.....pgs. 16-20

In the Community.....pg. 21

Around the College.....pgs. 22-24

2015-2016 SON Graduates.....pgs. 25-26

Accredited by the Commission  
 on Collegiate Nursing Education  
 (CCNE).





# Program Expansion

## BSN Program Set to Expand as ASN Program Phases Out

*Story submitted by Dr. Stacey Forsythe, Assistant to the Dean, CHHS.*

*In October 1962, the Kentucky Board of Nursing Education and Nurse Registration granted approval to establish an Associate Degree Program in Nursing at Western Kentucky University. The program was first granted initial accreditation by the NLN Council of Associate Degree Board of Review in 1966 and has continued to be reaccredited since that time, with the last reaccreditation being in 2015 by the National League for Nursing Accrediting Commission (NLNAC).*

Over the next three years, the School of Nursing, in The College of Health and Human Services (CHHS) at Western Kentucky University (WKU), will transition away from the traditional Associate of Science in Nursing Program (ASN) and increase students in the Bachelor of Science in Nursing (BSN) program to meet the workforce need for more BSN nurses. Admissions into the online Licensed Practical Nurse (LPN) to ASN program, currently one of only two in the state, will continue.

In 2010, the Institute of Medicine published a comprehensive plan for Nursing and Nursing Education in the U.S., commonly known as the Future of Nursing report. One of the key goals was to increase the proportion of registered nurses with baccalaureate degrees to 80 percent

by the year 2020. Because of this change, BSN nurses are currently in high demand by local employers and across the U.S. WKU wants to meet this workforce need by accommodating as many people as possible in its BSN program.

“We have continued strong student demand for the BSN program, with 80 students being admitted to the program every semester, and with steadily increasing size and strength of our applicant pool,” Dr. Mary Bennett, Director of the WKU School of Nursing, said. “We expect continued strong demand for this program, with 496 students currently enrolled in the pre-BSN program, seeking to obtain a seat. We would like to be able to admit every qualified student to the BSN program, so we will transfer resources from the ASN program to enlarge

the BSN program.”

The last class of traditional ASN students will be admitted into the program in January 2017. These students will progress through the program and complete their degrees in May 2019. Students still seeking entry into the WKU ASN program after the last admission cycle will be able to transition to either the WKU BSN program, or seek entry into one of the remaining ASN programs in Kentucky. As the traditional ASN program changes, the BSN program will increase enrollment by accepting up to 60 additional qualified students per semester to meet employer and student demands for the BSN degree. The WKU LPN to ASN online program, a novel program that is funded by the WKU Division of Learning and Outreach (DELO), will remain open while the College

The physical relocation of the ASN Program to the WKU South Campus occurred in Fall 1998 where it was part of the WKU Community College.



of Health and Human Services assesses the enrollment potential of this online program.

“CHHS and the School of Nursing continue to prepare our students to be human change agents by promoting a higher quality of life and providing cutting-edge, financially valuable programs to serve our constituents,” Dr. Bennett said. “Transitioning away from the traditional ASN program will allow for growth in our competitive and prestigious BSN program and will fulfill the needs of both the community and our students, while contributing to the Institute of Medicine target goal of increasing the proportion of registered nurses with a baccalaureate degree to 80 percent by 2020.”



The Medical Health Sciences Complex was constructed in 2013 to house both the nursing and physical therapy programs.



# Alumni Toast:



Dr. Susan Jones, PhD, RN, CNE, ANEF  
Professor Emerita,  
WKU School of Nursing

## M. Susan Jones Scholarship Dinner

It was an evening filled with cherishable memories as friends, family, colleagues and alumni gathered to celebrate Dr. Susan Jones' tenure at Western Kentucky University. A dinner was held in her honor to celebrate her ongoing community involvement and her recent appointment as a WKU Professor Emerita. The celebratory dinner was preceded by a silent auction benefiting the M. Susan Jones Scholarship (with The College Heights Foundation). The scholarship will support travel for WKU nursing students participating in study abroad programs or traveling to conferences to present their scholarly work. Over \$6,000 was raised for the scholarship through dinner ticket purchases, a silent auction, and donations made directly to the scholarship fund. The event was held at the Medical Center/ WKU Health Sciences Complex in Bowling Green, KY on Friday, November 6, 2015.

M. Susan Jones is Professor Emerita in the School of Nursing at WKU and has been an educator for over 44 years. She earned a BSN from the University of Tennessee in Memphis, a MSN from Vanderbilt University and a PhD in Nursing from the University of Cincinnati. She previously served as President of the Kentucky Nurses Association and served two



terms on the Kentucky Board of Nursing. Her research interests are rural issues including agricultural health and safety. In collaboration with colleagues and students, she has implemented numerous service learning projects in rural areas including a health promotion project with a Mennonite community in south central Kentucky. She has worked with associate, baccalaureate and graduate nursing students, as well as students from many different disciplines across campus. She has mentored many new faculty members including faculty members

who joined her in publications, grant writing, and public service opportunities. She has led numerous study abroad experiences to Ireland, England, and Scotland. One of her service endeavors included the development of a Kellogg project, the Farm Family Health and Safety organization, which has been replicated replicated in other states across the United States. This program, renamed the KY Partnership for Farm Family Health and Safety, Inc., spans several decades and continues to provide opportunities for service, scholarship, and teach-

ing to agricultural families throughout regions of Kentucky and Tennessee. Dr. Jones has also been awarded the University Award for Faculty Service in recognition of her community work.

Dr. Jones is an educator whose practice goes beyond the classroom and whose teaching and research has inspired and encouraged generations of healthcare professionals and partnerships. It was a joyous evening celebrating how the principles she taught them continue to guide them in their lives and careers today.



# Student Awards & Achievements



## BSN Prelicensure Student, Ryne Wilson, Awarded Externship Opportunity through Mayo Clinic

An encounter with a stranger in a bookstore last summer, led to 3rd semester BSN Pre-Licensure student Ryne Wilson's, recently awarded externship opportunity with Mayo Clinic's Nurse III Summer Externship in Minneapolis, MN this June. That stranger, BSN Pre-Licensure alumni, Matthew Garvey, noticed the all too familiar nursing textbooks Wilson was carrying.

"He just walked up to me and told me I should apply for this opportunity," said Wilson, who had never met Garvey. "I thought it was kind of odd, and I just kept it in the back of my mind...maybe I wouldn't do this, maybe I will."

Garvey was actually the only other student from Western

Kentucky University's Nursing school that had been awarded this same externship opportunity with the Mayo Clinic in the summer of 2014.

The Summer III Nursing Externship offers an educational work experience as well as an opportunity to live, socialize, and collaborate with other nursing students from around the country.

Wilson, intimidated about competitive nature of the program, submitted his application and was awarded the opportunity and assigned to working on the Med Surg floor in the Domintella Hospital June 6 - August 12, 2016

The externship provides the students with the opportunity to work alongside RN clinical coaches to experience nursing care at Mayo Clinic hospitals in their inpatient work areas.

Wilson has set his own goals for this awarded opportunity, "Implementing evidence-based practice, innovation, and providing a platform for nurses to learn and be innovative. (Giving) exceptional patient advocacy. There is a reason these patients are here, the name, expertise."

Following his mother's footsteps in pursuing the nursing profession, Wilson's own goals are to land a career in a large, teaching hospital, working in the Med Surg, Critical Care areas. He would also like to return to school to obtain his Masters degree in Acute Care Nurse Practitioner, with the goal to work in an Oncology facility.

## RN to BSN Student Publications in the Kentucky Nurse

Kerri Eklund and Brittany Janes, both submitted individual publications to the Kentucky Nurse, while students in the RN to BSN program. Their submissions were published in the January/February/March 2016 edition of the Kentucky Nurse, a publication of the Kentucky Nurses Association (KNA).

- Eklund, currently employed as RN at Hardin Memorial Health, submitted, "Summary Code of Ethics".
- Janes, currently employed as RN on the Cardiovascular ICU at Lake Cumberland Regional Hospital submitted, "I Just Couldn't Leave."



## Vanderbilt Experience: Student Nurse Internship Program (VESNIP)

The Vanderbilt Experience: Student Nurse Internship Program (VESNIP) was successfully completed by 12 WKU nursing students, three of which also completed their honors project during the internship. WKU is one of five schools invited to participate in the VESNIP opportunity. The students received invaluable experiences with clinical placements including; Women's Health, Critical Care, Acute Care, Pediatrics, Psychiatric, and Perioperative.

During the Internship the Vanderbilt nursing staff has the opportunity to nominate one student from each track to receive the Vanderbilt Credo award. Dr. Audrey Cornell, Clinical Associate Professor stated, "The student receiving the Credo award is a student that made our patients the highest priority by communicating effectively with patients and their families and was committed to being a team player."

All 12 WKU nursing student participants represented WKU SON with pride and professionalism and we are proud to say for the first time, two CHHS School of Nursing VESNIP participants were presented with the Vanderbilt Credo Award: Lexie Webb from Women's Health and Crystal Walker from Pediatrics.

## RN to BSN students received Kappa Theta Chapter of Sigma Theta Tau Scholarship Awards

- |                  |                    |
|------------------|--------------------|
| • Heather Duvall | • Tabitha Schepker |
| • Heather Higdon | • Nena Smith       |
| • Suzanne Lyle   | • Laconda Stasel   |

## CHHS Academic Awards

### Graduate Program, Spring 2016

- Academic Excellence in Nursing-Administration: Brian T. Brown
- Academic Excellence in Nursing-Nurse Educator: Jayme H. Trocino
- Academic Excellence in Nursing-Doctor of Nursing Practice: Janet L. Meyer

### RN to BSN Program, Fall 2015

- Academic Award – Katherine Posey
- Achievement Award – Adam Bland
- Professional Engagement Award – Madeline Alger

### RN to BSN Program, Spring 2016

- Achievement Award – Jessica Brianne Millay

### BSN Program, Fall 2015

- Academic Award: Wesley Edwards  
Alison Rollins
- Spirit of Nursing Award: Kevin Schroeder
- Helen Turner Award: Caroline Carter
- KANS Award: Christopher Stanfield

### BSN Program, Spring 2016

- Academic Award: Melissa Bean
- Helen Turner: Charles Johnson
- KANS: Kacie Gregory
- Spirit of Nursing: Lauren Osbourne



CHHS Spirit of Nursing Award Winner Lauren Osbourne, pictured with (l) Dr. Sherry Lovan, and (r) Dr. Neal Chumbler



# Student Achievements *continued...*

## DNP Graduate

### Samantha L. Port

Port, a recent MSN to DNP graduate, will present her DNP Research project titled "Nursing Interventions to Decrease the Primary Cesarean Section Rate: A Program Evaluation" during the upcoming Association of Women's Health, Obstetrics and Neonatal Nurses (AWHONN) Convention held in Grapevine, TX, June 11-15, 2016.



## DNP Graduate

### Janet L. Meyer

Meyer, a recent MSN to DNP graduate, published an article on her DNP Research project, "Health Coaching in Faith-Based Community Diabetes Education", in the International Journal of Faith Community Nursing, Vol.2: Iss. 1, Article 3. Available at: <http://digitalcommons.wku.edu/ijfcn/vol2/iss1/3>



## BSN Pre-Licensure's 4th Semester Student

### Madison Gilinsky

Submitted abstract:

*Hidden Behind a 53 Foot Trailer: Are Women Truck Drivers at Risk for Sexual Assault?* to End Violence Against Women International (EVAWI), and was invited to present her poster at the International Conference on Sexual Assault, Domestic Violence, and Engaging Men & Boys in Washington DC, March 2016.



## BSN Pre-Licensure's 4th Semester Student

### Keeley Klutts

Klutts, along with her preceptor, developed a policy for Kosair Children's Hospital (Louisville, KY) on care and management of traction for newborn patients with a rare cervical dislocation. The policy was created after an experience she had in providing care for a newborn patient, whose symptoms did not match any other documented cases in the U.S.; therefore, a policy or procedure for care did yet not exist.



# Alumni Spotlight • • • •

## Morgan McCubbins, '15

### *Blazing new paths...*



McCubbins, a recent graduate from the BSN Prelicensure program, is employed at Owensboro Health Regional Hospital as a BSN, RN in the Emergency Department. McCubbins recently wrote to the SON faculty, sharing her gratitude of the program at WKU.

"I just wanted to let you all know how thankful I am for all of my wonderful professors I had the pleasure of learning from and wanted you all to know that my experience as a new grad nurse in the ER is going absolutely wonderful!!! Of course I'm still nervous and still learning and making mistakes, but I truly feel that WKU nursing shaped and prepared me for this so well and for that I am so thankful!"

## Jacob Read, '13 | Nikita Read, '13

### *A Dynamic Team...*



Jacob and Nikita Read, both December 2013 graduates of the RN to BSN program, received academic awards while in studies at WKU. After graduation, they also both received academic scholarships to Vanderbilt University, where they entered the Nurse Practitioner program.

The Reads completed clinical hours at the Health Wagon, a program that has been featured on 60 minutes. They serviced the uninsured population in rural Appalachia, and are currently working as Nurse Practitioners within the Navajo Reservation in New Mexico.



# Faculty Promotions, Hires & Achievements

## Faculty Promotions

In Spring 2016, Dr. Lorraine Bormann and Dr. Tonya Bragg-Underwood were promoted to Associate Professor for the WKU School of Nursing.



**Dr. Lorraine Bormann,  
PhD, RN, MHA, CPHQ, FACHE**

Dr. Bormann graduated from Western Kentucky University with an Associate Degree in Nursing, a Baccalaureate in Healthcare Administration and a Master's Degree in Healthcare Administration. She received her PhD in Educational Leadership and Organizational Development from University of Louisville. She is credentialed through the Healthcare Quality Certification Board as a Certified Professional in Healthcare Quality, has Six Sigma training, holds a Graduate Leadership Studies Certificate, and is a Fellow in the American College of Healthcare Executives.

**Dr. Tonya Bragg-Underwood, DNP,  
APRN-FNP, CNE**

Dr. Bragg-Underwood began her nursing career as an LPN in 1996. She then graduated from Western Kentucky University with an Associate Degree in Nursing in 1999, a Baccalaureate in Nursing in 2006, a Master's Degree in Nursing Education 2009, a Post-Master's Family Nurse Practitioner in 2011 and received her Doctorate in Nursing Practice 2014.



## New Faculty



**Dr. Maire Blankenship, DNP, NP-C, OCN  
Assistant Professor**

Maire Blankenship is our newest tenure track faculty hire in the Doctor of Nursing Practice program. She comes to academics after 28 years in practice as an oncology nurse and six years as a nurse practitioner. During WKU's 2015-2016 academic year, she taught Advanced Physiological and Pathophysiological Concepts, Practice Management for Advanced Practice Nurses, Theoretical Foundations of Professional Nursing, and Advanced Issues in Professional Nursing. Maire continues to provide care for oncology patients at Graves Gilbert Clinic. She and her husband, Ray, have three children - Nate, Emily, and Allie. Maire enjoys reading, cooking, and travel.



**Veletta Ogaz, PhD (c), MSN, APRN-FNP  
Instructor**

Veletta Ogaz is a recent faculty hire in the Doctor of Nursing Practice program. Prior to WKU, Veletta taught at California Baptist University. During WKU's 2015-2016 academic year, she taught Primary Care Internship, Graduate Nursing Research, Research Applications, Program Evaluation, and FNP Practicum. She is currently completing her PhD in Nursing from Azusa Pacific University and hopes to complete in summer 2016. Veletta and her husband are proud that their oldest son, Alex, will be an incoming WKU freshman and Adam, their youngest son just turned 16.



**Tracy Jenkins, MSN, RN  
Instructor**

Tracy Jenkins came to WKU from Aquinas College in Nashville, Tennessee where she taught as an adjunct clinical instructor for five years while receiving her Master's in Nursing Education. In 2014, Tracy taught Fundamentals Clinicals at WKU and now teaches Med/Surg I Lectures, Simulation and Clinicals. Tracy also works as a Parallon Agency Nurse for HCA tri-star hospitals in the Kentucky and Tennessee areas. Tracy and her husband Chip have two children and two cats and will welcome their first grandchild in September.



**Rhonda Quenzer, MSN, RN  
Instructor**

Rhonda Quenzer is the newest instructor in the Associate of Science Nursing program. She has 22 years of nursing experience in a variety of areas. During the 2015-2016 academic year, she taught Fundamentals of Nursing in the ASN program. Prior to the 2015-2016 academic year, she taught in the Health Information Management program. She is currently completing her post Master's certification in the Psychiatric Nurse Practitioner program. Rhonda and her husband Collin, have four children, Will, Niko, Anna, and Jake.



**Miranda Peterson, MSN, CNE, RN  
Instructor**

Miranda Peterson is the newest instructor in the Bachelor of Science in Nursing program who will begin teaching Med Surg Nursing I in fall 2016. Prior to WKU, Miranda taught Med Surg III and Pediatrics for Western Kentucky Community & Technical College in Paducah since fall 2010. Miranda has been an RN for past 21 years, working in various units from Med Surg to Labor & Delivery. She received her BSN from WKU, her MSN in Nursing Education from the University of Southern Indiana, and began her DNP in fall 2014, with projected graduation of December 2016. Miranda and her husband Ben, have two boys; Caleb (14) and Cody (12), two cats, one dog, and are beekeepers to a couple of hives of honeybees.



**CHHS Faculty & Staff Awards**



**2015 Faculty Excellence in Public Service Award Winner**

Dr. Eve Main is the 2015 winner of the Faculty Excellence in Public Service Award. This award is given in recognition of distinguished activities in public service in the faculty member's department, CHHS and WKU. Dr. Main is the DNP Coordinator for the School of Nursing.



**2016 CHHS Outstanding Staff Award Winner**

Mrs. Renee Kilgore is the 2016 winner of the CHHS Outstanding Staff Award. This award is given in recognition of the staff member's outstanding support and dedication to his or her work in CHHS and WKU. Ms. Kilgore is the Lab Coordinator and Clinical Instructor for the School of Nursing.



**2016 Kathryn M. Mershon Nursing Faculty Scholarship Recipient**

Mrs. Neena Jones is the 2016 Kathryn M. Mershon Nursing Faculty Scholarship recipient from the Kentucky League Nursing (KLN) association. This Award for Excellence in Nursing Education in the Commonwealth of Kentucky is presented to outstanding academic nurse educators yearly during the annual business meeting of the Kentucky League for Nursing. The honor will recognize significant contribution to excellence and innovation in nursing education contributing to the preparation of the nursing workforce in the Commonwealth of Kentucky.



**Kentucky League  
for Nursing**

- Lori Alexander, Lora Moore, and Dawn Garrett Wright were elected to nominating committee for next year
- Dawn Garrett Wright served on nominating committee this year.
- Cathy Abell was a Director on the KLN Board this year and will continue to be next year.



Dr. Cathy Abell



Lori Alexander



Dr. Lora Moore



Dr. Dawn Garrett Wright



# Current Research: *Published Manuscripts, Presentations & Grants*

## Manuscripts

**Abell, C.H., Evans, C., Alexander, L., Bourne, K., Jones, M.S. (in press).** A Unique Clinical Experience for RN to BSN Students: Providing Farm Safety Education. *Journal of Nursing Education*.

**Abell, C. H.** (in press). Church-based health education: Topics of interest. *International Journal of Faith Community Nursing*.

**Branstetter, M. L., Main, M. E., & Bragg-Underwood, T. M.** (2015). Practice matters: Screening and monitoring hyperlipidemia. *International Journal of Faith Community Nursing*, 1 (2), 21-27.

**Wright, D. G., Main, M. E., & Branstetter, M. L.** (2015). Practice matters: Screening and care for those with hypertension. *International Journal of Faith Community Nursing*, 1 (1), 33-38.

**Mattingly, C. & Main, M.E.** (2015). Examining faith community nurses' perception and utilization of electronic health records. *International Journal of Faith Community Nursing*, 1 (1), 18-29.

**Garrett-Wright, D., Bormann, L., & Link, K.** (2016). Communicating Effectively and Therapeutically with Patients with a Mental Health Disorder. *Advance for Nurses: Advance Healthcare Network*, CD offering, February. <https://nursing.advanceweb.com/CE/TestCenter/Course.aspx?CourseID=1192&CreditID=1>

**Bormann, L. & Garrett-Wright, D.** (2015). Nurse Leadership and Staff Satisfaction: Transformational Theory and Servant Leadership are Key Areas of Focus Today. *Advance for Nurses: Advance Healthcare Network*, CE offering, November. <https://nursing.advanceweb.com/CE/TestCenter/Course.aspx?CourseID=1186&CreditID=1>

**Garrett-Wright, D. & Bormann, L.** (2015). Anxiety Disorders: Recognition and Management of These Conditions. *Advance for Nurses: Advance Healthcare Network*, CE offering, October. <https://nursing.advanceweb.com/CE/TestCenter/Course.aspx?CourseID=1181&CreditID=1>

**Link, K., Garrett-Wright, D.M., & Branstetter, M.** (2015). Practice matters: Screening and referring congregants with major depression. *International Journal of Faith Community Nursing*, 1(3), 81-90.

**Smith, L. & Branstetter, M.** (in press). A formative program evaluation of electronic clinical tracking system (ECTS) to meet national core competencies. *Computers, Informatics, Nursing*.

**Abell, C. H., Bragg-Underwood, T., Alexander, L., Abell, C. E., & Burd, V.** (2015). Nurses' knowledge and attitudes toward implementation of electronic medical records. *International Journal of Faith Community Nursing*, 1(3), 74-80.

**Bourne, K.** (2015). Mine workers, heat related illnesses, and the role of the occupational health nurse. *The Kentucky Nurse*, 63(3), 6-7.

Chumbler, N. R., Ganashen, S., O'Brien Cherry, C., **Garrett-Wright, D.**, & Bute, J. "Rewriting life narratives: Positive coping mechanisms in adolescent mothers." In *Research in the Sociology of Health Care: Issues in Health and Health Care for Special Groups, Social Factors, and Disparities*, edited by JJ Kronenfeld. Bingley, United Kingdom: Emerald Press. 2015 Oct; 8 (6 Suppl 3): 5131-40.

**Sturgeon, L.P., Bragg-Underwood, T., & Blankenship, M.** (2016). Practice matters: Prevention and care of individuals with Type 2 Diabetes. *International Journal of Faith Community Nursing*, 2(1), 31-39.

**Bennett, M., L. Bormann, S. Lovan, & R. Cobb.** (in press) Pre-admission Predictors of Student Success in a Traditional BSN Program. *Journal of Nursing Regulation*.

**Bennett, M.** (in press). Nursing care of the end-of-life patient twenty five years after passage of the Patient Self-Determination Act. *The Journal of Hospice and Palliative Nursing*.

## Podium Presentations

**Bourne, K.** (2016) Truck Drivers: The Challenge with Healthy Living. AAOHN Chapter meeting, Bowling Green, Kentucky

**Evans, C.** (2016). Rural and Urban Nurses Knowledge and Perceived Confidence/Competency of Palliative Care for end-of-life patients in 8 long-term care facilities. 25th Annual University of Kentucky Nursing Research Papers Day. Lexington, KY

Jones, M. S., **House, S., & Main, M. E.** (2015). Anabaptists cultures: What health care professionals need to know. Seminar presentation, University of Louisville Medical and Dental School. November 20, 2015. Louisville, KY.

**Bormann, L.** (2016). Institute of Medicine Core Competencies for Health Professionals: Foundation for Care Coordination in Practice. Podium presentation, 8th Annual Care Coordination Conference, Baltimore, MD; May 10, 2016.

**Bennett, M.** (2016). Pre-admission Predictors of Student Success in a Traditional BSN Program. Podium presentation, 12th Annual Nursing Faculty Development Workshop: Teaching to Transform for the New Reality of Nursing Practice, University of Kentucky College of Nursing, Lexington, KY; May 16, 2016.

**Smith, L. & Branstetter, M.** (2015). A Formative Program Evaluation of Electronic Clinical Tracking System (ECTS) to Meet National Core Competencies. Podium presentation, STTI 43rd Biennial Convention, Las Vegas, NV; November 8, 2015.

**Briggs, C.** (2015). The Influence of a Feature Film on the Empathy Ratings of Nursing Students, Break out session, 2015 Research Papers Day, University of Kentucky College of Nursing, Lexington, KY; November 6, 2015.

**Bourne, K.** (2015). Developing a Workplace Sexual Violence Framework Related to Women Truck Drivers, Podium presentation, University of Kentucky, Lexington, Kentucky, September 2015.

**Garrett-Wright, D., Main, E., & Jones, S.** (2016). Enhancing Healthcare for an Emerging Agricultural Population: Anabaptist Perceptions of Health and Healthcare Services. Podium presentation, International Society for Agricultural Safety & Health; Lexington, KY; June 2016.

**Bormann, L. & Garrett-Wright, D.** (2016). Implementing Concept Based QSEN into Pre-nursing Introduction to Professional Nursing Course with a Global Perspective. Podium presentation, Kentucky League for Nursing Annual Conference; Louisville, KY; May 18, 2016.

**Main, E., Garrett-Wright, D., & Jones, S.** (2016). Strategies to Facilitate the Community-Based Participatory Research Approach in a Diverse Community. Podium presentation, 30th Annual Conference of the Southern Nursing Research Society; Williamsburg, VA; February 26, 2016.

**Sturgeon, L., Garrett-Wright, D., Main, E., Blackburn, D. & Jones, S.** (2015). Is Sitting Time Associated with Increased Health Risks in Nurses? Podium presentation; Sigma Theta Tau International 43rd Biennial Convention; Las Vegas, NV; November 10, 2015.

**Garrett Wright, D., Starks, S. & Wolf, C.** (2015). Project EMPOWER: An Interdisciplinary Project. Podium presentation; Sigma Theta Tau International 43rd Biennial Convention; Las Vegas, NV; November 8, 2015.

Wolf, C., **Garrett-Wright, D., & Starks, S.** (2015). Working with the Culturally Diverse: Exploring the Needs of International Refugees and Staff within Kentucky. Podium presentation; Kentucky Counseling Association; Louisville, KY; November 5, 2015.

Wolf, C., **Garrett-Wright, D., & Starks, S.** (2015). Using Community Outreach to Train Students: An Interprofessional Project with International Refugees and Staff. Podium presentation; North American Chapter of the World Council for Curriculum and Instruction Conference (NAC-WC-CI); Nashville, TN; October 24, 2015.

**Bourne, K.** (2016). Truck Drivers: The Challenge with Healthy Living. Podium presentation; American Association of Occupational Health Nurses Chapter Meeting; Bowling Green, KY; May 2016.

**Evans, C., & Alexander, L.** (2016). Clinical Environments Correlate with RN-BSN Students' Perceptions of Learning. (poster presentation): Kentucky League for Nurses 12th Annual Nurse Educator Conference, Louisville, Kentucky.



## Poster Presentations

**Wright, D., Sturgeon, L., Bormann, L., House, S., & Jones, S.** (2016). Bath Basin Use in Kentucky Acute and Long Term Care. Poster presentation; 30th Annual Conference of the Southern Nursing Research Society; Williamsburg, VA; February 26, 2016.

**Alexander, L., & Evans, C.** (2016). Integrating Preventative Topics into a Community Service Learning Project (poster presentation): ACHNE Indianapolis, IN.

**Evans, C.** (2015). Rural and Urban Nurses Knowledge and Perceived Confidence/Competency of Palliative Care for end-of-life patients in long-term care facilities. (poster presentation): Kentucky Rural Health Association Annual Conference

**Harris, K., Moore, L., Cole, S., & Minix, B.** (2015). Developing an Admission Rubric. Poster presentation; National Organization for Associate Degree Nursing; Jacksonville, FL; November 15, 2015.

**Cole, S. & Larson, L.** (2015). Promoting Professionalism Among Nursing Students in the Clinical Setting. Poster presentation; National Organization for Associate Degree Nursing; Jacksonville, FL; November 15, 2015.

**Smith, L. & Branstetter, M.** (2016). A Formative Program Evaluation of Electronic Clinical Tracking System (ECTS) to Meet National Core Competencies. Poster presentation; STTI Kappa Theta 19th Annual Research Day; Bowling Green, KY; April 12, 2016.

**Bourne, K.** (2015). Behind Closed Curtains on Eighteen Wheels: The Risks Factors and Consequences of Intimate Partner Violence in Female Long-Haul Truck Drivers, Poster presentation; Sigma Theta Tau International 43rd Biennial Convention; Las Vegas, NV; November 7-11, 2015.

**Bourne, K.** (2016). Hidden Behind a 53 Foot Trailer: Are Women Truck Drivers at Risk for Sexual Assault? Poster presentation; Ending Violence against Women 2016 International Conference; Washington, DC; March 22-24, 2016.

**Bourne, K.** (2016). Hidden Behind a 53 Foot Trailer: Are Women Truck Drivers at Risk for Sexual Assault? Poster presentation; Sigma Theta Tau Kappa Theta Research Day; Bowling Green, KY; April 12, 2016.

**Bourne, K.** (2016). Hidden Behind a 53 Foot Trailer: Are Women Truck Drivers at Risk for Sexual Assault? Poster presentation; WKU School of Nursing/Commonwealth Health Corporation; Bowling Green, KY; April 29, 2016.

**Bourne, K.** (2016). Workplace Sexual Violence in Female Truck Drivers: A Conceptual Framework to Look at the Problem, Poster presentation; American Association of Occupational Health Nurses 2016 National Conference; Jacksonville, FL; April 12, 2016.

**Jones, S., Main, E. & Garrett -Wright, D.** (2015). Using Technology to Respond to the Stress and Mental Health Concerns among Farmers and Their Families, Poster presentation; Kentucky Nurses Association, Louisville, KY; October 2, 2015.

**Abell, C. H., Evans, C., Alexander, L., Bourne, K. & Jones, S.** (2016) A Unique Clinical Experience Increases RN to BSN Students' Knowledge about Farm Safety (poster presentation): Kentucky League for Nurses 12th Annual Nurse Educator Conference, Louisville, Kentucky.

**Larson, L., Coleman, S.** (2015). Promoting Professionalism Among Nursing Students in the Clinical Setting. Poster Presentation; NLN Summit, Las Vegas, NV; October 2015.

## Funding

**Main, E.** Health Resources and Services Administration (2014). Advanced Education Nurse Traineeship Grant, Awarded July 2014, funding for 2015-2016 \$224,230.

**Smith, L. & Shackelford, J.** (2016) "The role of resilience in college student veterans' persistence towards a degree", QTAG Grant awarded March 10, 2016, \$ 2980.50.

**Blankenship, M., Tinius, R., Maples, J., & Hoover, D.** (2016) "Physical activity during pregnancy: Novel pathways and intervention strategies for improving maternal and neonatal outcomes", RCAP Grant awarded May 15, 2016, \$ 15,484; KBRIN Grant awarded May 1, 2016, \$108,434.

**In Spring 2016, the following students in the Doctor of Nursing Practice program, presented their research topics to colleagues and constituents.**

- **Kara S. Haughtigan**, *Occupational Skin Disease Prevention: An Educational Intervention for Cosmetology Students*
- **Kimberly A. Link**, *Primary Care Provider's Knowledge of Posttraumatic Stress Disorder and Screening: An Integrative Review*
- **Janet L. Meyer**, *Health Coaching in Faith-Based Community Diabetes Education*
- **Leanna R. Miller**, *Knowledge and Attitudes of Advance Practice Nurses Concerning Use of Pharmacogenomic Testing*
- **Samantha L. Port**, *Nursing Interventions to Decrease the Primary Cesarean Section Rate: A Program Evaluation*
- **Vickie L. Shoumake**, *How Does Staff Education Affect Polypharmacy and Adverse Drug Events in the Elderly: An Integrative Review*
- **Dolores E. White**, *A Pilot Study of Nurses' Perceived Comfort in Delivering End-of-Life Discussions and Intent to Practice End-of-Life Care*



Dr. Beverly Holland, Leanna Miller and Dr. Cathy Abell, following Miller's presentation.



BSN faculty member, Kara Haughtigan, presenting her research topic.



ASN faculty member, Vickie Shoumake presenting her research topic.



# Master of Science in Nursing *Research* In the Community

## Fall 2015 | NURS 512 Research Applications, Research Poster Presentations

- **Kathryn L. Beard** - Safe Sleep versus Co-Sleeping Practices
- **Amanda L. Clay** - Postpartum Depression Screening Strategies
- **Rebekah F. Corbin** – Flipping the Classroom
- **Natalie B. Davenport** - Patient and Family-Centered Care
- **Lisa E. Hoover** – The EHR’s Adverse Outcomes: The Nurse’s Role in Patient Safety
- **Sondra N. Lindsey** – Breaking the Barriers between Nurses and Culturally Diverse Patients
- **Julia E. McFarland** – Nurse Faculty Shortage
- **Lauren K. Taphorn** - Pressure Ulcer Prevention
- **Brianne Triplett** - Reducing Catheter-Associated Urinary Tract Infections
- **Jayme H. Trocino** - Role Transition for Novice Nurse Educators
- **Meghan E. Witten** - Virtual Reality Exposure Therapy and Post-Traumatic Stress Disorder

## Spring 2016 | NURS 512 Research Applications, Research Poster Presentations

*Students enrolled in NURS 512 presented their research posters at SON’s 19th Annual Nursing Research Day that was sponsored by Sigma Theta Tau International, Kappa Theta Chapter on April 12, 2016.*

- **Garnett R. Conley**, *Antihypertensive Medication Adherence*
- **Katherine K. Dillingham**, *Nurse to Patient Ratios in Emergency Departments*
- **Kasey E. Hartlage**, *Bronchiolitis Clinical Pathway*
- **Amberlyn M. Hornsby**, *Folic Acid and Preventing Neural Tube Defects*
- **Erin N. Mattingly**, *Alarm Fatigue in Nursing*
- **Kimberly M. Pharris**, *The “Hip” Choice*
- **Brittney N. Sandlin**, *Family Centered Care for Adolescents with Type I Diabetes Mellitus*
- **Christina M. Thomas**, *Hear Here: Noise in the Perioperative Setting*
- **Aimee N. Wentz**, *Protecting an Investment: Retaining New Graduates*
- **Raymond O. Young**, *Reduced Heart Failure Related Hospital Admissions Using Non-Invasive Telemonitoring*

Pictured (l to r):  
Garnett R. Conley  
Katherine K. Dillingham  
Kasey E. Hartlage  
Amberlyn M. Hornsby  
Erin N. Mattingly  
Kimberly M. Pharris  
Brittney N. Sandlin  
Christina M. Thomas  
Raymond O. Young



## WKU Mobile Health Unit

The Institute for Rural Health (IRH) believes that students learn from every patient. The more patients that the IRH is able to see and treat, the more knowledge and real-world experiences the students of the College of Health and Human Services (CHHS) receive as part of their education. The IRH staff and CHHS students have traveled numerous miles to offer rural communities health care and health education, which is an essential component and cornerstone of the IRH mission.

Over the past three years, our undergraduate nursing students have averaged over 400 hours annually of student engagement with the Mobile Health Unit, that serves patients located in rural areas.



## Progressive Agricultural Safety Days

On September 24, 2015, SON’s 4th semester BSN prelicensure students as well as the RN to BSN students, volunteered to serve as educational vendors at the 20th anniversary of “Progressive Agriculture Safety Days”!

Over 620 4th graders from Warren, Allen & Edmonson counties participated in the program.

This program, recog-

nized as the largest rural safety and health education program for children in North America, provides training and resources for local communities to conduct one-day safety and health programs that are age-appropriate, hands-on, fun, and safe for children. The KY Partnership was one of the original organizations involved in the Progressive Agriculture Safety Days® program.



*SON students speaking to the children on bicycle safety.*



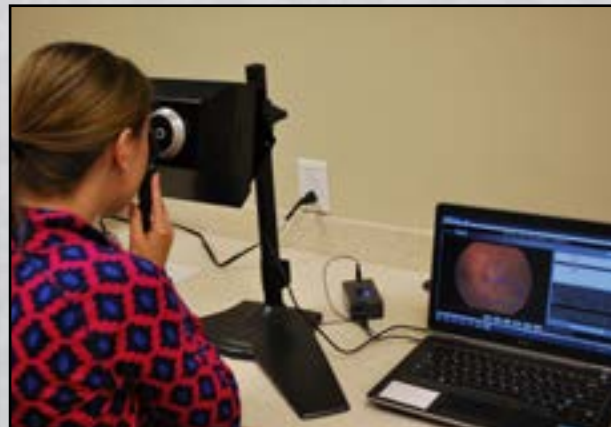
# Around the College

## Graduate Programs

- **New Graduate Concentrations:**
  1. *BSN to DNP Nurse Executive*
- **Updates to Graduate Concentrations:**
  1. *Psychiatric-Mental Health Nurse Practitioner* is now fully supported by WKU faculty
  2. *Nurse Educator* has moved to all online courses
- **New Journal:** *International Journal of Faith Community Nursing* offered on WKU's TopSCHOLAR
- **New Graduation Simulation Lab:** featuring eye, ear and pelvic simulators
- **Sigma Theta Tau International Honor Society Induction:** Inducted 18 graduate students as new members into the Kappa Theta Chapter on November 19, 2015.



Dr. Lynette Smith and Veletta Ogaz at the Sigma Theta Tau International Honor Society Induction, Fall 2015.



New Graduate Simulation Lab features eye (pictured), ear and pelvic simulators.

## RN to Bachelor of Science in Nursing (RN to BSN) Program

- **Ranked Top 50:** Our RN to BSN program ranked in the top 50 RN to BSN Online programs for 2016.
- **Sigma Theta Tau International Honor Society Induction:** Inducted 23 RN to BSN students as new members into the Kappa Theta Chapter on November 19, 2015.
- **Wide -Reach Student Recruitment:** enrolled students from 25 cities in Kentucky, two cities in Tennessee and one city in Indiana for the 2015-2016 academic year.



# Around the College

## Bachelor of Science in Nursing (BSN) Prelicensure Program

- **NCLEX Pass Rates:** Received a 97% pass rate on the National Council Licensure Examination (NCLEX) from the Kentucky Board of Nursing (KBN) for the 2015 calendar year; 102 of 105 graduates passed the NCLEX exam on their first attempt.
- **Nurse Recruitment Fairs:** Hosted two nurse recruitment fairs for 4th semester students in Fall 2015 and Spring 2016 with over 15 vendors in attendance at each fair.
- **Sigma Theta Tau International Honor Society Induction:** Inducted 34 BSN students as new members into the Kappa Theta Chapter on November 19, 2015.



Vendors speaking with our 4th semester BSN prelicensure students at Nurse Recruitment Fair, Fall 2015.



New student inductees at the Sigma Theta Tau International Honor Society Induction, Fall 2015.

## Associate of Science in Nursing (ASN) Program

- **LPN to ASN Online program:** School of Nursing will continue to offer the LPN to ASN program after the ASN program phases out in 2017. Currently, it's one of two LPN to ASN programs in the state of Kentucky.

**WKU**

**LPN to ASN**

Advance your nursing career in as little as one year with an ASN degree from Western Kentucky University.

For more information, visit:  
[wku.edu/info/lpn-asn](http://wku.edu/info/lpn-asn)

**WKU**

This program helps LPNs further their nursing career through an Associate of Science in Nursing.

- Become an RN in as little as one year
- Offered face-to-face and online, with practical experience
- Flexible scheduling so you can continue to work
- Highly qualified faculty
- Accredited by the Accreditation Commission for Education in Nursing (ACEN)

Western Kentucky University is an equal opportunity institution. Higher education and employment opportunities are available to all individuals regardless of race, sex, or ethnicity.





BSN students attending the National Student Nurses Association (NSNA) convention in Orlando, FL.



DNP student working on the ear simulator in the new Graduate Simulation Lab.



DNP Graduates at the May 2016 commencement ceremony.



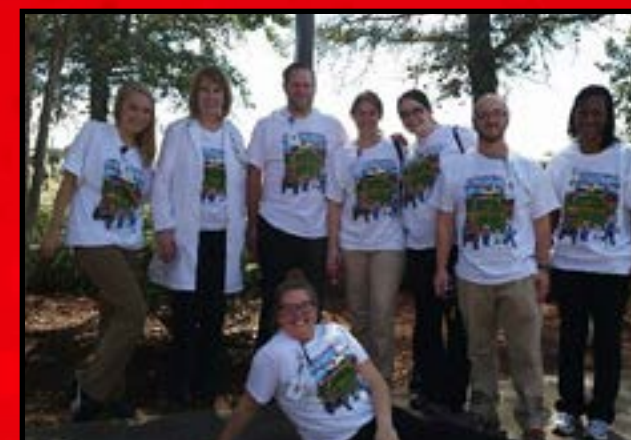
Graduate students perfecting suturing techniques.



Community-wide simulation event in BSN program.



ASN faculty presenting "Developing an Admission Rubric" at the National Organization for Associate Degree Nursing at the annual conference in Jacksonville, FL.



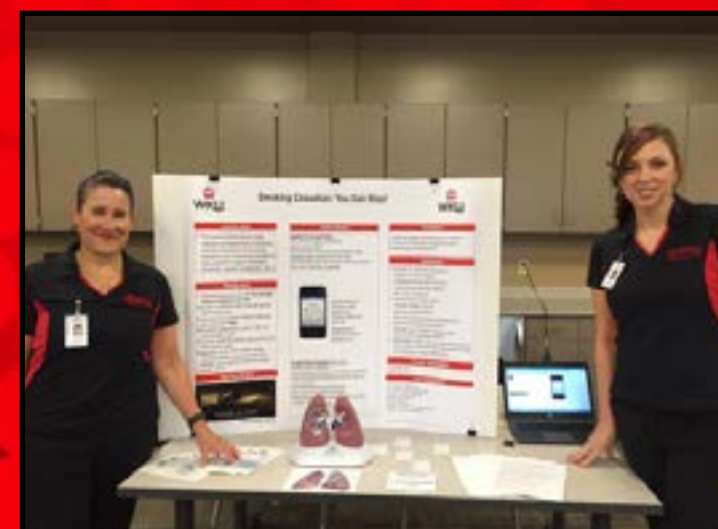
RN to BSN & BSN prelicensure students working at the Ag Safety Day event.



K.A.N.S. students volunteering time to make blankets for hospice.



Greenview Regional Hospital Scholarship Recipients



RN to BSN students presenting at Health Fair at WKU-Owensboro.



Big Red getting his blood pressure checked by our own BSN student!



# 2015-2016 WKU SCHOOL of NURSING GRADUATES

## Fall 2015

### Associate of Science in Nursing

Allie Baran  
Michelle Barbalas  
Yekaterina Barko  
Mary Bessette  
Mark Burns  
Stuart Callaway  
Cheryl Chrzanowski  
Leigh Ellis  
Cedric Fykes  
Emily Gammel  
Rebecca Harrison  
Stephanie Henderson  
Crystal Johnston  
Olivia Kelley  
Amanda Kinser  
Rennae Kutchera  
Briana Motter  
Candace Overton  
Lauren Perkins  
Jentry Popham  
April Salisbury  
Jennifer Schroader  
Vanessa Soules  
Marisa Stafford  
Holly Stallings  
Sarah Steele  
Kaylin Stinson  
Katrina Vanover  
Sabrina Wetzel

### Bachelor of Science in Nursing

Peyton Allsmiller  
Amanda Baker  
Miranda Basham  
Seth Basham  
Jessica Becker  
Nathaniel Blankenship  
Michaela Briley  
Meredith Bullock

Carolyn Burggren  
Caroline Carter  
Kendra Clark  
Rebecca Clark  
David Clore  
Ryan Colwell  
Kyle Dahl  
Maegan Davis  
Russel D’Cunha  
Mason Donisi  
Wesley Edwards  
Andrea Ewen  
Rachel Fain  
Seth Gary  
Kelly Gershenson  
Arron Gunderson  
Brittany Gunter  
Heather Hanes  
Evan Harris  
Duke Jackson  
Latasha Jones  
Keeley Klutts  
Breana Landrum  
Tasha Love  
Candi Lynch  
Morgan McCubbins  
Michael Melton  
Robert Milam  
Jasmine Miller  
Melissa Moore  
Mary Mullins  
Mary Newton  
Ashley Nuckols  
Rebecca Phelps  
Sydney Renfro  
Kori Renick  
Joel Robertson  
Kevin Schroeder  
Amanda Seegmiller  
Gabriella Sentilek  
Paige Smith  
Autumn Stacy  
Juliana Stamps  
Christopher Stanfield  
Kara Sullivan

Amy Terry  
Kelsey Towns  
Alison Varson  
Nadina Walton  
Katlyn Watt  
Lexie Webb  
Jessica White  
Renee Wise

### RN to BSN Bachelor of Science in Nursing

Madeline Alger  
Adam S. Bland  
Miranda Bonner  
Ty Bowles  
Cynthia Brooks  
Jennifer Brooks  
Emma N. Burden  
Kyla Byard  
Jennifer Byrd  
Jessica Chapman  
Sarah Clark  
Traci Earley  
Kerri Eklund  
Elizabeth Farler  
Erin N. Garmon  
Jenny Grimes  
Jenna Hack  
Katelyn M. Hale  
Cortney Harrell  
Susan R. Hicks  
Courtney Highbaugh  
Brittany Janes  
Leslie A. Jones  
Kayla LaRue  
Jamica Lunsford  
Katharine Marx  
Dottie Matthews  
Christina D. McCrady  
Dana Nall  
Jeremy Payne  
Kathryn Payne  
Michael C. Partin  
Samantha L. Peebles

Katherine Posey  
Sara Prewitt  
Kimberly N. Sarlls  
Tammi Satterfield  
Angela R. Shehan  
Tara Smith  
Jessica H. Strange  
Jenna Tarter  
Felicia Tate

### Master of Science in Nursing

Nurse Educator  
Elizabeth A. Bonnet  
Ronna L. Cassidy  
Laura B. Deaton  
Joyce S. Keel  
Dawn L. Latham  
Julia E. MacFarland  
Judith A. Mitchell  
Talitha W. Richards  
Leslie N. Rossetter

### Family Nurse Practitioner

Megan L. Bow  
Scott A. Bradley  
Larry C. Bratcher  
Lora R. Brown  
Amanda J. Cox  
Brittany A. Davidson  
Lauren M. Dillard  
LaTanya F. Dooley  
Kara S. Drane  
Kimberly S. Evans  
Calla M. Freeman  
Tiffany R. Frye  
Cory S. Gearlds  
Abigail S. Haberman  
Matthew C. Johnson  
Kristy M. Keeney  
Robin A. McCoy  
Natalee L. Neikirk  
Dana A. Osborne  
Lyndsey W. Oxford  
Kelsey E. Pedley

Justin T. Reed  
Latricia S. Riley  
Carson A. Teague  
Brandy L. Thompson  
Miranda N. Tompkins  
Chance R. Tyler

### Post-Master Certificate Family Nurse Practitioner

Amanda G. Mutter

### Nurse Educator

Wayne R. MacGregor

## Spring 2016

### Associate of Science in Nursing

Jacqueline Atwell  
Justin Autry  
Molly Blevins  
Emily Chenault  
Candace Dennison  
Jacqueline Doyle  
Heather Goodrum  
Michelle Graham  
Heather Hagan  
Moriah Hale  
Bethany Hawkins  
Veronica Jackson  
Sharon King  
Teresia Kingrey  
Candice Kinser  
Ann Kirby  
Caitlan Laird  
Traci McKenzie  
Chanary Nop  
Courtney O’Connor  
Dee Ann Phillips  
Andyn Rowe  
Jaymie Sanchez  
Kristen Slater  
Jackie Smith  
Kara Turner

Mary Welch  
Heather Whitley  
Stacy Whitt  
Linnea Younger  
Alicia Zimmerman

### Bachelor of Science in Nursing

Ashley Abbott  
Adele Adams  
Caroline Alexander  
Katelyn Armstrong  
Tara Barnett  
Dustin Bateman  
Melissa Bean  
James Bewley  
Kelley Bigney  
Sarah Blevins  
Elizabeth Bomar  
Alyssa Bush  
Larry Cassidy  
Katelyn Cerqua  
Eliza Chaney  
Allison Clark  
Kaitlin Connelly  
Lauren Crawford  
Katie Davis  
Debra Denton  
Drew Edwards  
Amanda Ervin  
Kenneth Fry  
Madison Gilinsky  
Carra Gorrell  
Kacie Gregory  
Jeremy Hall  
Jesica Bernhard  
Taylor Hodges  
Callie Hullett  
Lauren Hutchison  
Charles Johnson  
Krsiten Kaiser  
Roger Key  
Sarah Lankford  
Katelyn Luckett  
Elizabeth Montoya-Solares

Nikko Moreno  
Kelsie Nelson  
Laura Nelson  
Danielle Norman  
Taylor Oliver  
Lauren Osbourne  
Abbey Pais  
Mollie Pajakowski  
Allison Payne  
LeNora Sanders-Peger  
Amanda Perkins  
Megan Raley  
Samantha Robinson  
Sydney Roll  
David Saturley  
Kristina Simpson  
Leanne Sims  
Jenna Taylor  
Joseph Wagers  
Crystal Walker  
Breanne Webb  
Kaitlin Wells  
Makka Wheeler  
Jennifer Wisbey  
Madelyn Wright

### RN to BSN Bachelor of Science in Nursing

Brandy Abell  
Amina Abou  
Dana Bakkass  
Stephanie Bennett  
Stephanie R. Combs  
Melisa G. Cook  
Sara D. Croghan  
Donna D. Farlee  
Andrea C. Ford  
Renee Y. Fort  
Jordan B. Freels  
Anessa L. Holman  
Rachel P. Houchen  
Kristin R. McGehee  
Chad D. Meacham  
Jessica B. Millay

Sabrina N. Miller  
Laura Pearson  
Paula S. Stewart  
Amanda M. Sweet  
Sandor J. Szabo  
Amber Vincent  
Raesha B. Weaver

### Master of Science in Nursing Nurse Administrator

Brian T. Brown  
Brittany N. Clemons  
Melissa R. Ebelhar  
Donna S. Mann  
Natassia L. Peyton  
Sally H. Stoermer

### Nurse Educator

Jacqueline N. Felts  
Lynsey R. Flynn  
John Hewitt  
Jessica F. Proffitt  
Kimberly L. Skipworth  
Jayme H. Trocino

### Family Nurse Practitioner

Marcia M. Atherton  
Amanda L. Clay  
Lauren K. Shelton  
Stephanie R. Steff  
Tracy L. Taylor  
Erin W. Toombs

### Doctor of Nursing Practice

Kara S. Haughtigan  
Kimberly A. Link  
Janet L. Meyer  
Leanna R. Miller  
Samantha L. Port  
Vickie L. Shoumake  
Dolores E. White





## Consider making a gift to the **WKU School of Nursing**

---

The WKU Annual Fund provides student scholarships, strengthens academic departments and programs, enhances library services, provides faculty and graduate level development and research initiatives, attracts visiting scholar lectures and supports student extracurricular opportunities. To make a gift, visit: <http://bit.ly/1rP5JLa>



**Your gift today makes a difference in the lives of our students and prepares them to change and challenge the future!**



WKU School of Nursing  
1906 College Heights Blvd. #11036  
Bowling Green, KY 42101

MCHC Physical Address: 700 1st Avenue | Bowling Green, KY 42101

#270-745-3391 | [www.wku.edu/nursing](http://www.wku.edu/nursing)