

WKU CAMPUS RESOURCES



TOOLS FOR
ONLINE LEARNERS

WKU ONLINE STUDENT SERVICES

WKU Online Student Services

- <https://www.wku.edu/online/services/index.php>
- (270) 745-3028
- online.success@wku.edu
- South Campus Academic Wing C170
- 2355 Nashville Rd., Bowling Green, KY 42101
- <https://calendly.com/wku-online-success-coaching-team>





Exceptional academic programs and world-renowned faculty are only part of what makes the WKU experience unparalleled in American higher education. Our state-of-the-art facilities, commitment to student success, and highly engaged campus community demonstrate what we call the Spirit of WKU. Your hopes, dreams, and ideas are important to us. We constantly seek to provide an environment where creativity is nurtured and intellect grows. Climb with us at Western Kentucky University.



WWW.WKU.EDU/ADMISSIONS



POTTER HALL,
FIRST FLOOR



(270)745-2551



ADMISSIONS@WKU.EDU

[360 Virtual Tour](#)



BILLING & ACCOUNT SERVICES

The Office of Student Billing & Account Services is committed to ensuring financial integrity and exemplary customer service through our primary responsibilities which include preparing student bills, processing student payments, managing Third Party Billing, issuing refunds, depositing to departmental accounts, collecting past due accounts and processing consolidation and payments of Perkins Loans for completed students.

- ✓ (270)745-6381
- ✓ billings@wku.edu
- ✓ Potter Hall, 208

[VISIT WKU BILLINGS](#)



FINANCIAL AID & ASSISTANCE

The WKU Department of Student Financial Assistance is pleased to welcome you to WKU! The resources found within this website will assist you with questions you may have about the Financial Aid process, scholarships and aid available at WKU, and provide you with helpful checklists and timelines you will need throughout your time as a student at WKU.

- (270)745-2755 ✓
- fa.help@wku.edu ✓
- Potter Hall, 317 ✓

[VISIT FINANCIAL AID](#)



ACDC coordinates academic advising activities for undergraduate students. Here you can find access to tutoring, transitional assistance for first-year students and help for current students who wish to bring their grades up.

**ADVISING
AND CAREER
DEVELOPMENT
CENTER
(ACDC)**



**WWW.WKU.EDU/ACDC
WWW.WKU.EDU/ACDC**



**DSU, 2ND FLOOR,
SUITES 2141 AND
2001**



(270)745-5065



ACADEMIC.ADVISING@WKU.EDU

ACADEMIC ADVISING

Provides a wide range of academic services to undergraduate students. WKU Advising coordinates academic advising activities among undergraduate colleges and academic departments for undergraduate students.



ACDC, ADVISORS

- ✓ (270)745-5065
- ✓ academic.advising@wku.edu
- ✓ DSU, 2141

[LEARN MORE ABOUT ADVISING](#)



CAREER STUDIO

Career Services helps students and alumni identify and reach their career and employment goals. The service also offers employers access a workforce and supports faculty and staff by providing opportunities for student workers.

ACDC, CAREER SERVICES

- (270)745-3095 ✓
- careerhelp@wku.edu ✓
- DSU, 2001 ✓

[VISIT CAREER DEVELOPMENT](#)



THE LEARNING CENTER (TLC)

VISIT THE LEARNING CENTER (TLC).

Free tutoring services for undergraduate courses and academic success skills during the Fall and Spring semesters.

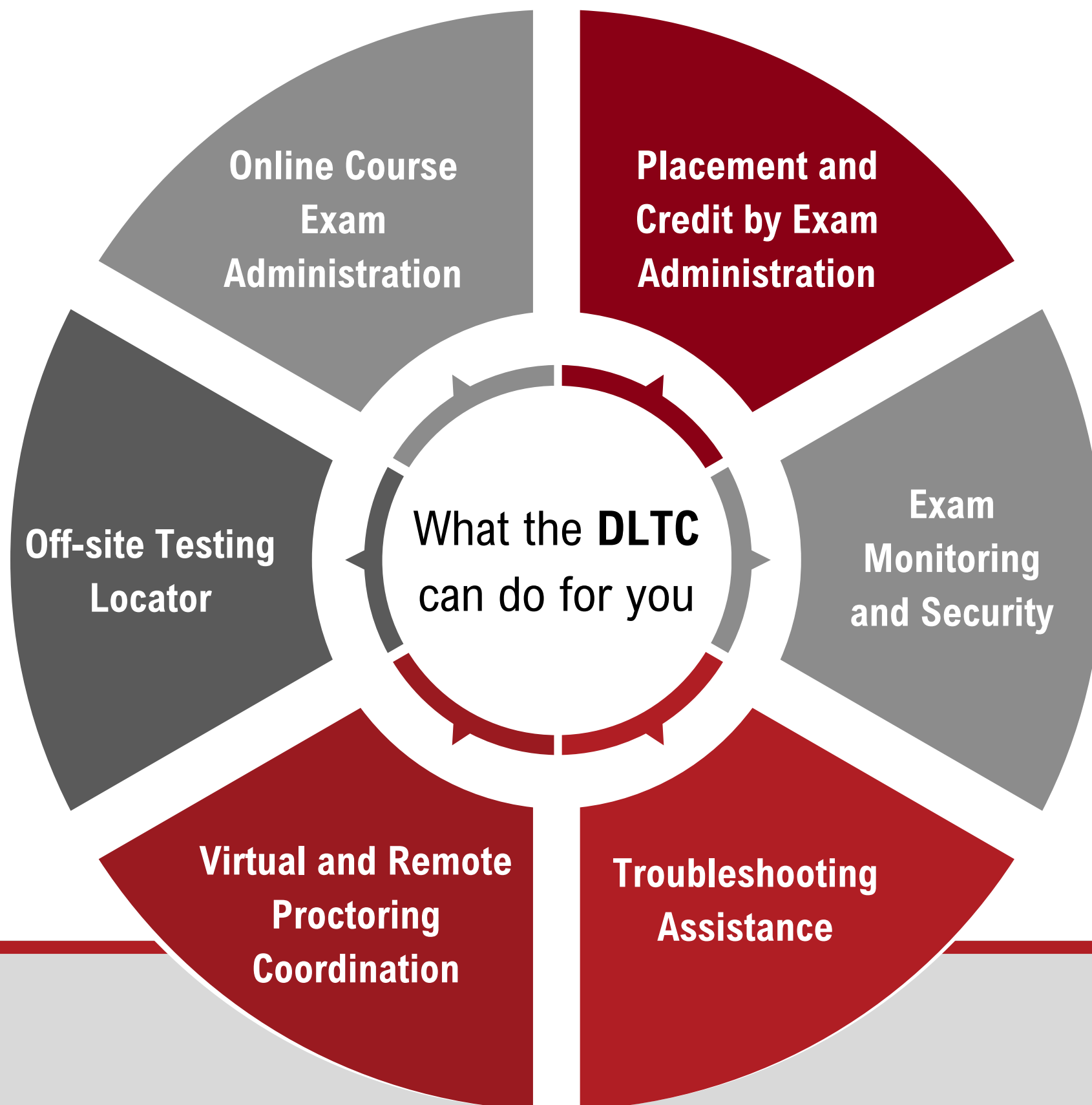
- ✔ (270)745-5065
- ✔ tlc@wku.edu
- ✔ DSU 1082

Promotes academic excellence by helping students understand course content, develop study skills and gain confidence as self-directed learners.



DLTC

DISTANCE LEARNING
TESTING CENTER



For a list of acceptable placement exams for WKU admissions

- Visit <https://www.wku.edu/getready/>



Scheduling at DLTC for admission, placement, and credit by exam

- Visit registerblast.com/wku



Test Preparation through WKU Continuing and Professional Development

- Visit <https://www.wku.edu/cpd/test-prep/index.php>



Test Preparation for CLEP

- Visit <https://modernstates.org/>



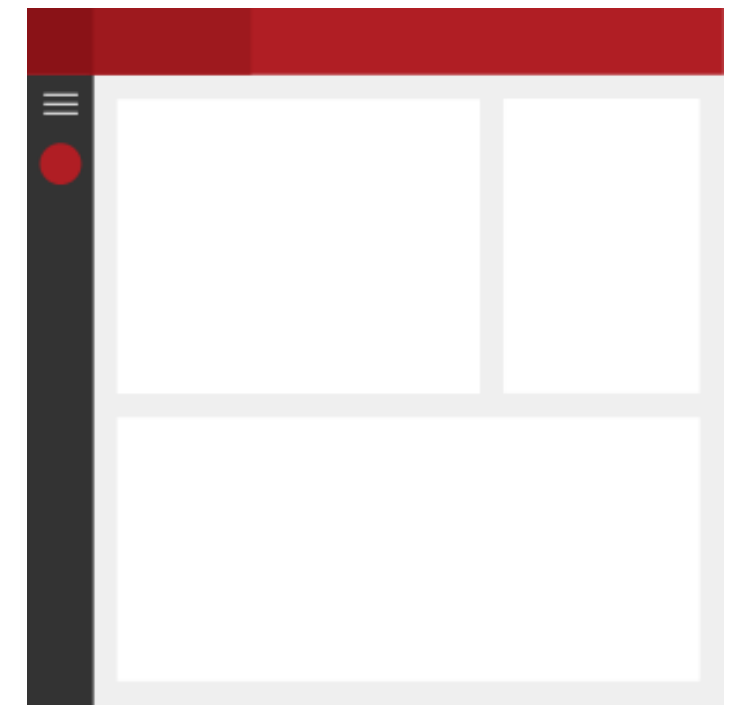
Test Preparation for Accuplacer

- Visit <https://practice.accuplacer.org/>

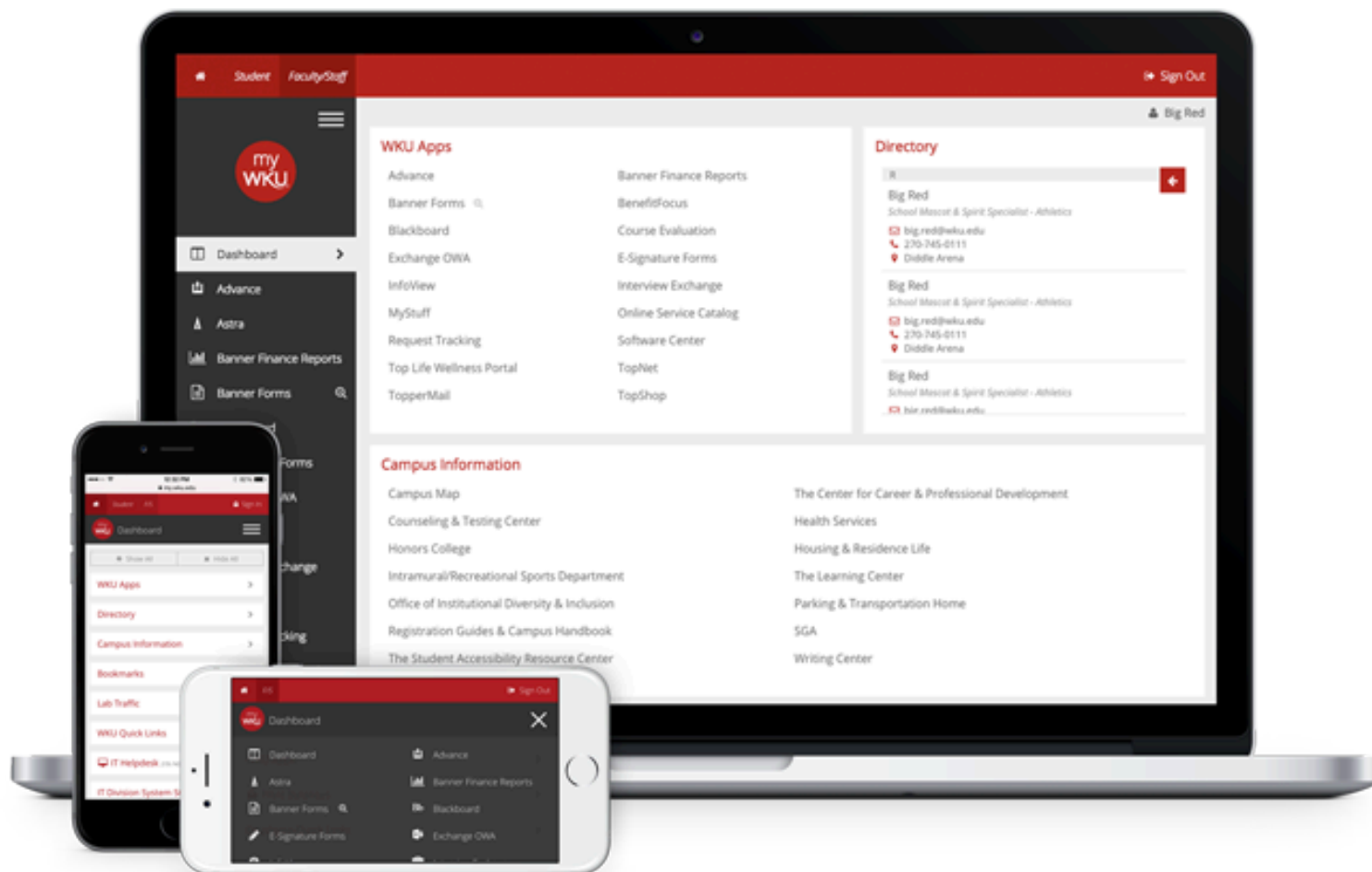
myWKU Hilltopper Portal



iWKU
mobile
guide



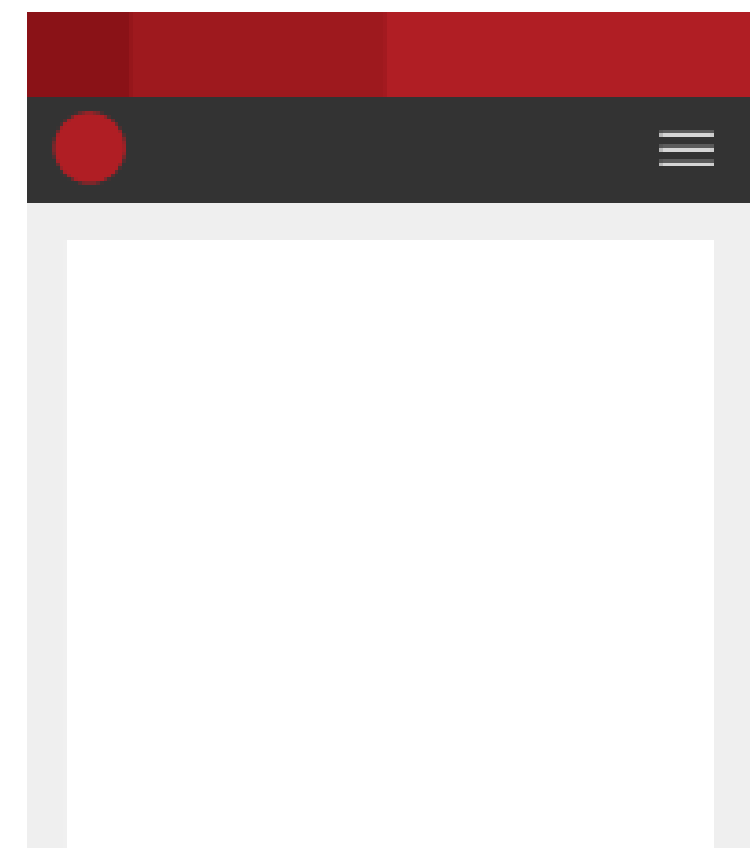
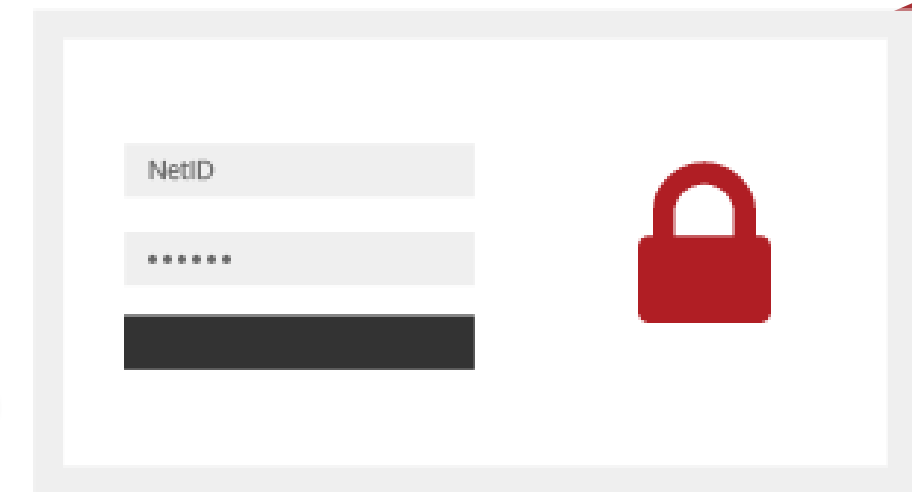
my.wku.edu



Content You Need: Before you even sign in myWKU portal has tons of helpful information and links. Login and get even more tailored info just for you.

One Login: Sign in once with your WKU NetID and you have one click access to TopNet, Blackboard, TopperMail Email, and more! No need to sign in multiple times.

Mobile Ready: Take the new, mobile-friendly myWKU with you everywhere. Visit my.wku.edu from your mobile device to access all of these features.

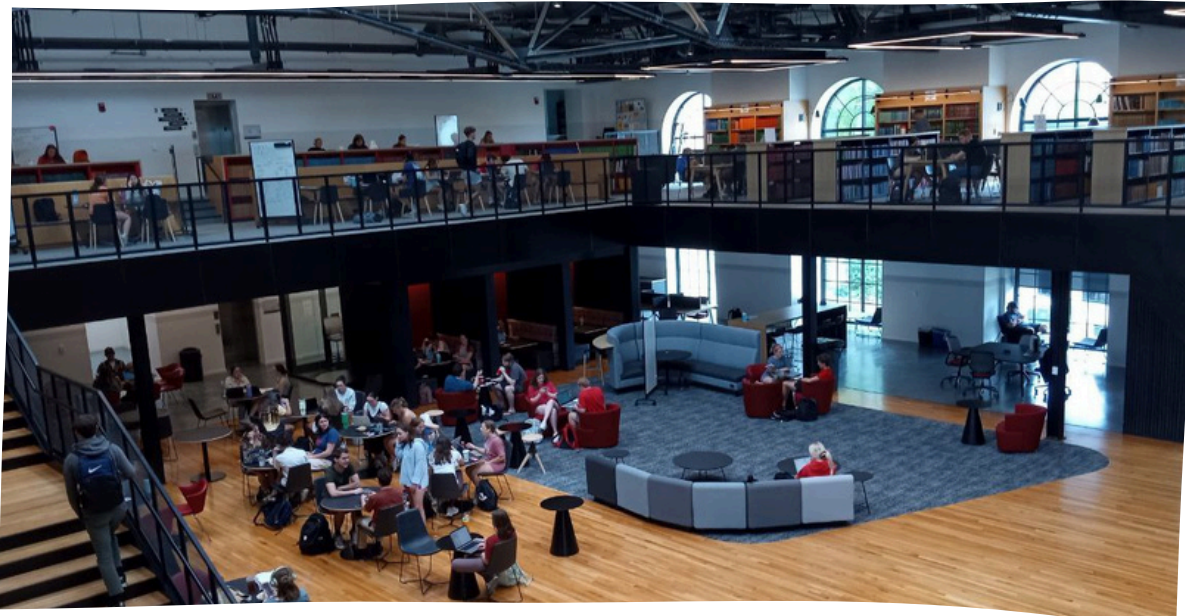




WKU LIBRARIES

HELM, CRAVENS

WKU Libraries' mission is to equip students and faculty with the knowledge and resources necessary for academic success, and to provide the community with access to diverse collections and inclusive spaces. We support the essential research and creative activities of the WKU community, facilitate knowledge creation and discovery, and provide quality instruction and service for all patrons.



- ✓ (270)745-3951
- ✓ web.reference@wku.edu
- ✓ Helm, Cravens

[VISIT WKU LIBRARIES](#)



The WKU Counseling Center is committed to promoting the academic mission of the university by providing a variety of psychological services to students that will augment recruitment, retention, and graduation by strengthening students' capacity to tolerate distress, form healthy relationships, and seek healthy expressions of their ideals and values.



WWW.WKU.EDU/HERETOHELP



POTTER HALL, 409



(270)745-3159



COUNSELING.CENTER@WKU.EDU

COLLEGE OF EDUCATION AND BEHAVIORAL SCIENCES

BETTY AND DR. PAGE TALLEY FAMILY COUNSELING CENTER

PSYCHOLOGY TRAINING CLINIC

INTERACT



TALLEY FAMILY COUNSELING

The Talley Family Counseling Center provides mental health services free of charge to couples, families, individuals, and groups. Located on Western Kentucky University's campus.

✓ (270)745-4204

✓ Talley Family Counseling Center,
Corner of Regents and Normal Street

[VISIT TALLEY FAMILY COUNSELING](#)

The goal of the SARC is to ensure that all students with disabilities are provided access to all facets of the Western Kentucky University experience; to facilitate and coordinate support services and programs that enable students with disabilities to maximize their educational potential; and to increase awareness among all members of the University so that students with disabilities are able to achieve academic success based on their abilities, not their disabilities.

SARC

THE STUDENT ACCESSIBILITY RESOURCE CENTER

- ✓ 270-745-5004
- ✓ sarc.connect@wku.edu
- ✓ Downing student Union,
First Floor, 1074
- ✓ <https://www.wku.edu/sarc/>

- [Registering with SARC](#)
- [Services for Current Students](#)
- [Student FAQs](#)
- [Student Resources](#)
- [Student Support Services, Disabilities](#)





WKU ID CENTER

Provides essential services with WKU ID Card, Big Red and Dining dollar program, Campus Identification Card Administration, and WKU Dining Services Meal Plan Administration.

[VISIT THE ID CENTER](#)

[ONLINE WKU ID INFORMATION](#)

✓ (270)745-2417

✓ idcenter@lists.wku.edu

✓ DSU, 2125



WRITING CENTER

The Writing Center offers individual conferences about writing with our staff of English majors and graduate students. Our services are free and available to all Western Kentucky University students.



- ✓ writingcenter@wku.edu
- ✓ Cherry Hall, 123

[VISIT WKU WRITING CENTER](#)



PARKING AND TRANSPORTATION

The goal of the Parking and Transportation Services department is to create a multi-modal campus to help faculty, staff, students, and visitors reach their destinations. The department manages parking and transportation resources to meet these goals. This includes creating a safe environment for walking, biking, riding a bus, or driving a vehicle.

[VISIT PARKING AND TRANSPORTATION](#)

[2024-2025 PARKING MAP](#)



(270)745-2361



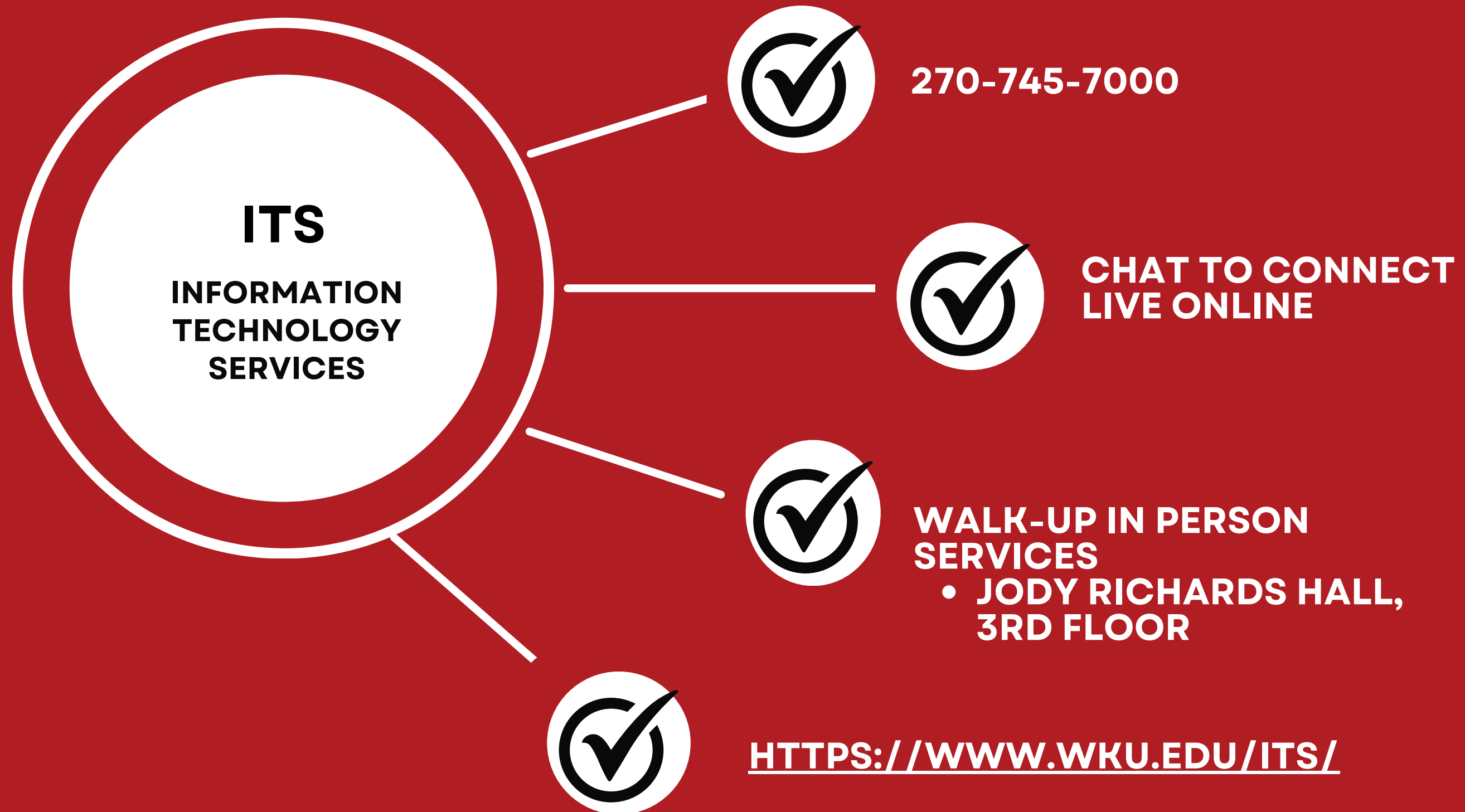
transportation@wku.edu



578 Campbell Lane, Bowling Green



Information Technology is here to help you. We support a wide selection of applications and offer services to help you succeed as a Hilltopper. Use myWKU to access multiple applications and resources or view our full list of services.



The ITS Service Desk serves as a single point of contact for technology support and can be reached in a variety of ways



WKU MILITARY STUDENT SERVICES

Military Student Services-provides comprehensive support for students to succeed at WKU, from the point of inquiry through graduation and ultimately on to a productive career.

- ✓ (270)745-2180
- ✓ military@wku.edu
- ✓ Gary Ransdell Hall, 2067

[LEARN MORE ABOUT
MILITARY SERVICES](#)



FirstGen PROGRAMS

We are glad you are here to Climb With Us! As a first-generation student, you are already demonstrating your resilience and resourcefulness, but we all know the climb can be steep. Think of the resources and engagement opportunities on this page as climbing tools that can help you reach the Top and benefit you even after graduation.

WKU defines first-generation as “neither parent graduated from a traditional four-year college.” It does not mean that you are the first one in your family to attend college. In addition, a student is considered "first generation" if their parents graduated with an associate's degree (two-year degree), attended college but did not graduate, or had a sibling graduate with a bachelor's degree.

- About 30% of WKU undergraduate students are first-generation.

✓ 270-745-3920

✓ firstgen@wku.edu

[HTTPS://WWW.WKU.EDU/FIRSTGEN/GET-INVOLVED/INDEX.PHP](https://www.wku.edu/firstgen/get-involved/index.php)





REGIONAL CAMPUSES

ELIZABETHTOWN, FT. KNOX, SOMERSET, GLASGOW, OWENSBORO

WKU Regional Campuses offer Degree Programs that fit the workforce needs of their regions. They bring WKU to you, providing convenience and flexibility along with personalized services to help you reach your educational goals. The goal is to provide flexible classes, academic resources, and student support in a variety of spaces. From academic advising and financial aid counseling to on-site resources.



Math and writing assistance to students by well-trained student tutors. Tutors explain concepts and help students work through assignments. Located in Glasgow, virtual appointments available as well.

[Learn more about the START Center](#)

ELIZABETHTOWN

(270)706-8870 ✓

etown-ftknox@wku.edu ✓

FT. KNOX

(270)745-2626 ✓

etown-ftknox@wku.edu ✓

SOMERSET

(606)677-8317 ✓

leah.turner@wku.edu ✓

GLASGOW

(270)861-6900 ✓

glasgow@wku.edu ✓

OWENSBORO

(270)684-9797 ✓

owensboro@wku.edu ✓

WKU CARES ONLINE SUCCESS

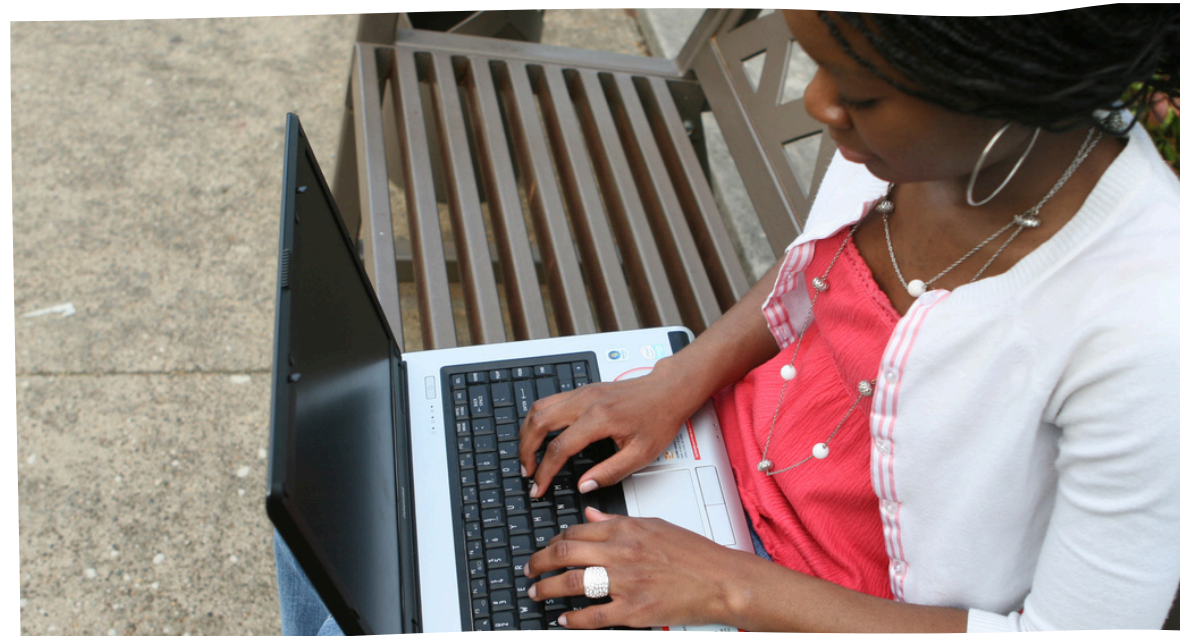


Your coach will always be there for you, lending support and guidance throughout your entire program, and connecting you with resources you need most. We also understand that life changes and sometimes goals have to be adjusted - that's okay - we will be there to help you map out an alternate route!

SOUTH CAMPUS

- ✓ (270)745-3028
- ✓ online.success@wku.edu
- ✓ Academic Wing, C170

[SCHEDULE A COACHING SESSION](#)



ON DEMAND ONLINE SUCCESS



On Demand is a WKU Online option that provides quality courses which students can complete in as little as seven weeks or an extended time frame. On Demand courses allow students to balance work and home life while pursuing college credit. All courses are delivered online and can be started any day, any time, and any where.

SOUTH CAMPUS

- (270)745-4158 ✓
- ondemand@wku.edu ✓
- Academic Wing, C170 ✓

[LEARN MORE ABOUT ON DEMAND](#)

WKU[®]

C.A.R.E.S.

Coaching for
Academic Readiness,
Excellence, and
Success

 **WKU**
Online | ONLINE
STUDENT
SERVICES

Access Student Resource Portal

<https://www.wku.edu/online/srp/index.php>



• **Tanya Vincent- tanya.vincent@wku.edu**

- Program Manager, Online Services
- South Campus C173
- 270.745.3815



Coach Alex



Coach John



Coach Tammy

WHY MIGHT YOU NEED A STUDENT SUCCESS COACH?

- to set realistic personal and academic goals
- to overcome obstacles you may be having in day-to-day life
- to resolve problems and provide support
- to find services online and on campus

email the Student Success
Coaching team at
online.success@wku.edu

schedule a coaching session at
<https://calendly.com/wku-online-success-coaching-team>

ADDITIONAL QUESTIONS?



[@WKUOnlineStudentServices](https://www.youtube.com/@WKUOnlineStudentServices)

Would you benefit from an online success coach?
Would you like to talk more?

- tanya.vincent@wku.edu
- tammy.dorris@wku.edu
- john.carter@wku.edu
- alexandra.peach@wku.edu
- <https://calendly.com/wku-online-success-coaching-team>



 **ONLINE
STUDENT
SERVICES**

**Coaching for
Academic Readiness,
Excellence,
and Success**